

Cassette-Corder

Operating Instructions

Нáвод на obsлyхy

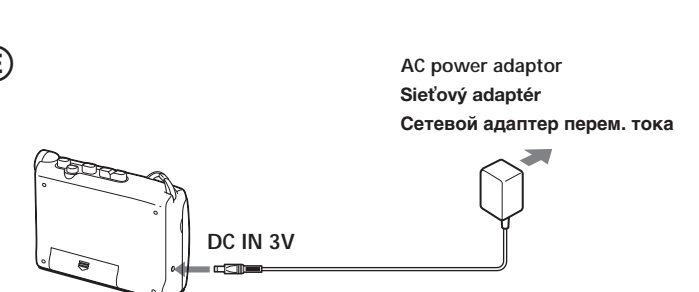
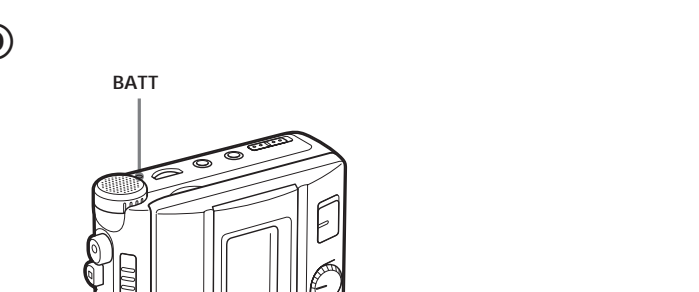
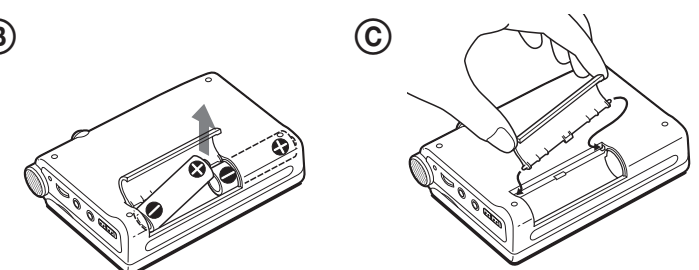
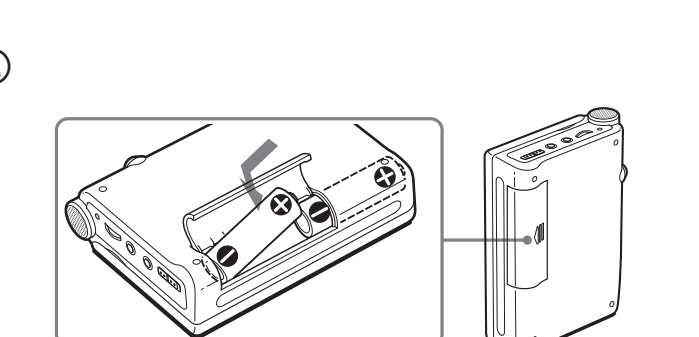
Инструкция по эксплуатации

TCM-200DV/150

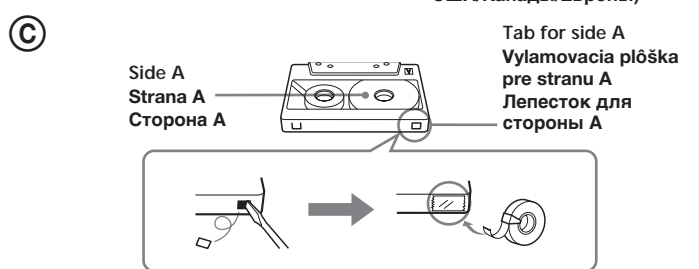
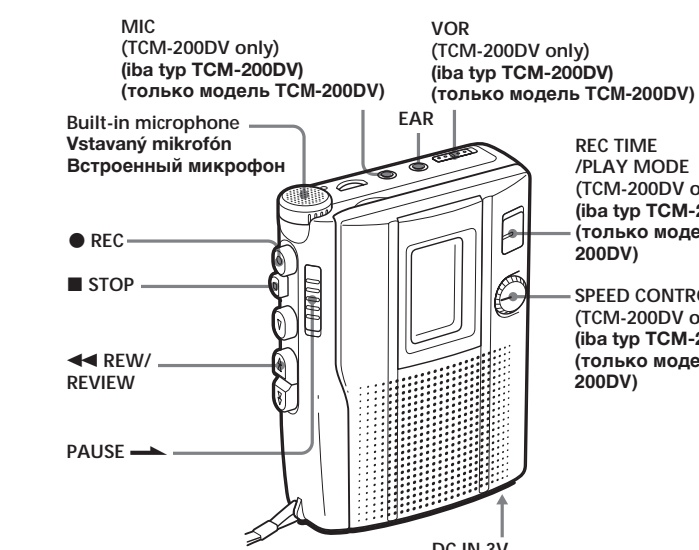
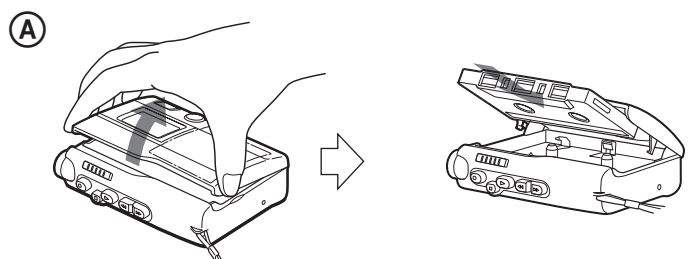
Sony Corporation © 2002 Printed in China

http://www.sony.net/

A



B



English

About this manual

The instructions in this manual are for 2 models. The TCM-200DV is the model used for illustration purposes.

TCM-	200DV	150
VOR	○	-
REC TIME /PLAY MODE	○	-
SPEED CONTROL	○	-
MIC jack	○	-

○: provided or supplied
-: not provided or not supplied

Note (TCM-200DV only)
Tapes recorded with the REC TIME/PLAY MODE switch in the DOUBLE position cannot be played properly on a tape recorder without the REC TIME/PLAY MODE switch function.

Getting Started

Preparing a Power Source

Choose one of the following power sources.

Dry Batteries (see Fig. A-②)

Make sure that nothing is connected to the DC IN 3V jack (this does not apply to TCM-150 for USA/Canada/Europe).

- 1 Open the battery compartment lid.
- 2 Insert two R6 (size AA) batteries with correct polarity and close the lid.

Notes

- Do not charge a dry battery.
- Do not use a new battery with an old one.
- Do not use different types of batteries.
- When you do not use the unit for a long time, remove the batteries to avoid any damage caused by battery leakage and subsequent corrosion.
- Dry batteries will not be drained when another power source is connected.

To take out the batteries (see Fig. A-③)

To attach the battery compartment lid if it is accidentally detached (see Fig. A-④)

When to replace the batteries (see Fig. A-⑤)

Replace the batteries with new ones when the BATT lamp dims.

Notes

- After the batteries have been used for a while, the BATT lamp may flicker with the playback sound when you turn up the volume; however this does not mean that you need to replace the batteries.
- The unit will play back normally for a while, even after the BATT lamp dims. However, replace the batteries as soon as you can. If you do not, subsequent recording will not be done correctly.

Battery life* (approx. hours)

	Sony alkaline LR6 (SG)**	Sony R6P (SR)
Playback	16	4
Recording	25	6.5

* Measured value by the standard of JEITA (Japan Electronics and Information Technology Industries Association). (Using a Sony HF series cassette tape)

** When using a Sony LR6 (SG) "STAMINA" alkaline dry batteries (produced in Japan)

Note
The battery life may shorten depending on the operation of the unit.

For maximum performance we recommend that you use alkaline batteries.

House Current
(see Fig. A-⑤) (except TCM-150 for USA/Canada/Europe)

Connect the AC power adaptor to DC IN 3V and to a wall outlet. Use the AC-E30HG AC power adaptor (not supplied). Do not use any other AC power adaptor.

Notes

- Specifications for AC-E30HG vary for each area. Check your local voltage and the shape of the plug before purchasing.
- Do not touch the AC power adaptor with wet hands.
- Connect the AC power adaptor to an easily accessible AC outlet. Should you notice an abnormality in the AC power adaptor, disconnect it from the AC outlet immediately.

Operating the Unit

Recording (see Fig. B-①, ②)

You can record right away with the built-in microphone.
Make sure that nothing is connected to the MIC jack (TCM-200DV only).

- 1 Insert a normal (TYPE I) tape with the side to be recorded facing the cassette holder.
- 2 For TCM-200DV only: Set REC TIME/PLAY MODE to the desired mode. NORMAL (4.8cm/s): for optimum sound. Recommended for normal recordings. DOUBLE (2.4cm/s): for double recording time (for example, 120 minutes using both sides of a 60-minute cassette). Suitable for recording conferences, dictations, etc. Not recommended for recording music.

Notes on VOR (Voice Operated Recording) (TCM-200DV only)

- The VOR system is affected by the environmental recording conditions. When you use the system in a noisy place, the unit will stay in Recording mode only. Recording will be made independent of this control. (TCM-200DV only)
- Notes on VOR (Voice Operated Recording) (TCM-200DV only)
 - The VOR system is affected by the environmental recording conditions. When you use the system in a noisy place, the unit will stay in Recording mode only. Recording will be made independent of this control. (TCM-200DV only)
 - The VOR system may not record the beginning of the sound you want to record because it starts recording only after it catches the sound. For an important recording, set it to OFF.

Battery life* (approx. hours)

	Sony alkaline LR6 (SG)**	Sony R6P (SR)
Playback	16	4
Recording	25	6.5

* Measured value by the standard of JEITA (Japan Electronics and Information Technology Industries Association). (Using a Sony HF series cassette tape)

** When using a Sony LR6 (SG) "STAMINA" alkaline dry batteries (produced in Japan)

Note
The battery life may shorten depending on the operation of the unit.

For maximum performance we recommend that you use alkaline batteries.

House Current
(see Fig. A-⑤) (except TCM-150 for USA/Canada/Europe)

Connect the AC power adaptor to DC IN 3V and to a wall outlet. Use the AC-E30HG AC power adaptor (not supplied). Do not use any other AC power adaptor.

Notes

- Specifications for AC-E30HG vary for each area. Check your local voltage and the shape of the plug before purchasing.
- Do not touch the AC power adaptor with wet hands.
- Connect the AC power adaptor to an easily accessible AC outlet. Should you notice an abnormality in the AC power adaptor, disconnect it from the AC outlet immediately.

Operating the Unit

Recording (see Fig. B-①, ②)

You can record right away with the built-in microphone.
Make sure that nothing is connected to the MIC jack (TCM-200DV only).

- 1 Insert a normal (TYPE I) tape with the side to be recorded facing the cassette holder.
- 2 For TCM-200DV only: Set REC TIME/PLAY MODE to the desired mode. NORMAL (4.8cm/s): for optimum sound. Recommended for normal recordings. DOUBLE (2.4cm/s): for double recording time (for example, 120 minutes using both sides of a 60-minute cassette). Suitable for recording conferences, dictations, etc. Not recommended for recording music.

Notes on VOR (Voice Operated Recording) (TCM-200DV only)

- The VOR system is affected by the environmental recording conditions. When you use the system in a noisy place, the unit will stay in Recording mode only. Recording will be made independent of this control. (TCM-200DV only)
- Notes on VOR (Voice Operated Recording) (TCM-200DV only)
 - The VOR system is affected by the environmental recording conditions. When you use the system in a noisy place, the unit will stay in Recording mode only. Recording will be made independent of this control. (TCM-200DV only)
 - The VOR system may not record the beginning of the sound you want to record because it starts recording only after it catches the sound. For an important recording, set it to OFF.

Battery life* (approx. hours)

	Sony alkaline LR6 (SG)**	Sony R6P (SR)
Playback	16	4
Recording	25	6.5

* Measured value by the standard of JEITA (Japan Electronics and Information Technology Industries Association). (Using a Sony HF series cassette tape)

** When using a Sony LR6 (SG) "STAMINA" alkaline dry batteries (produced in Japan)

Note
The battery life may shorten depending on the operation of the unit.

For maximum performance we recommend that you use alkaline batteries.

House Current
(see Fig. A-⑤) (except TCM-150 for USA/Canada/Europe)

Connect the AC power adaptor to DC IN 3V and to a wall outlet. Use the AC-E30HG AC power adaptor (not supplied). Do not use any other AC power adaptor.

Notes

- Specifications for AC-E30HG vary for each area. Check your local voltage and the shape of the plug before purchasing.
- Do not touch the AC power adaptor with wet hands.
- Connect the AC power adaptor to an easily accessible AC outlet. Should you notice an abnormality in the AC power adaptor, disconnect it from the AC outlet immediately.

Operating the Unit

Recording (see Fig. B-①, ②)

You can record right away with the built-in microphone.
Make sure that nothing is connected to the MIC jack (TCM-200DV only).

- 1 Insert a normal (TYPE I) tape with the side to be recorded facing the cassette holder.
- 2 For TCM-200DV only: Set REC TIME/PLAY MODE to the desired mode. NORMAL (4.8cm/s): for optimum sound. Recommended for normal recordings. DOUBLE (2.4cm/s): for double recording time (for example, 120 minutes using both sides of a 60-minute cassette). Suitable for recording conferences, dictations, etc. Not recommended for recording music.

Notes on VOR (Voice Operated Recording) (TCM-200DV only)

- The VOR system is affected by the environmental recording conditions. When you use the system in a noisy place, the unit will stay in Recording mode only. Recording will be made independent of this control. (TCM-200DV only)
- Notes on VOR (Voice Operated Recording) (TCM-200DV only)
 - The VOR system is affected by the environmental recording conditions. When you use the system in a noisy place, the unit will stay in Recording mode only. Recording will be made independent of this control. (TCM-200DV only)
 - The VOR system may not record the beginning of the sound you want to record because it starts recording only after it catches the sound. For an important recording, set it to OFF.

English

About this manual

The instructions in this manual are for 2 models. The TCM-200DV is the model used for illustration purposes.

TCM-	200DV	150
VOR	○	-
REC TIME /PLAY MODE	○	-
SPEED CONTROL	○	-
MIC jack	○	-

○: provided or supplied
-: not provided or not supplied

Note (TCM-200DV only)
Tapes recorded with the REC TIME/PLAY MODE switch in the DOUBLE position cannot be played properly on a tape recorder without the REC TIME/PLAY MODE switch function.

Getting Started

Preparing a Power Source

Choose one of the following power sources.

Dry Batteries (see Fig. A-②)

Make sure that nothing is connected to the DC IN 3V jack (this does not apply to TCM-150 for USA/Canada/Europe).

- 1 Open the battery compartment lid.
- 2 Insert two R6 (size AA) batteries with correct polarity and close the lid.

Notes

- Do not charge a dry battery.
- Do not use a new battery with an old one.
- Do not use different types of batteries.
- When you do not use the unit for a long time, remove the batteries to avoid any damage caused by battery leakage and subsequent corrosion.
- Dry batteries will not be drained when another power source is connected.

To take out the batteries (see Fig. A-③)

To attach the battery compartment lid if it is accidentally detached (see Fig. A-④)

When to replace the batteries (see Fig. A-⑤)

- After the batteries have been used for a while, the BATT lamp may flicker with the playback sound when you turn up the volume; however this does not mean that you need to replace the batteries.
- The unit will play back normally for a while, even after the BATT lamp dims. However, replace the batteries as soon as you can. If you do not, subsequent recording will not be done correctly.

English

About this manual

The instructions in this manual are for 2 models. The TCM-200DV is the model used for illustration purposes.

TCM-	200DV	150
VOR	○	-
REC TIME /PLAY MODE	○	-
SPEED CONTROL	○	-
MIC jack	○	-

○: provided or supplied
-: not provided or not supplied

Note (TCM-200DV only)
Tapes recorded with the REC TIME/PLAY MODE switch in the DOUBLE position cannot be played properly on a tape recorder without the REC TIME/PLAY MODE switch function.

Getting Started

Preparing a Power Source

Choose one of the following power sources.

Dry Batteries (see Fig. A-②)

Make sure that nothing is connected to the DC IN 3V jack (this does not apply to TCM-150 for USA/Canada/Europe).

- 1 Open the battery compartment lid.
- 2 Insert two R6 (size AA) batteries with correct polarity and close the lid.

Notes

- Do not charge a dry battery.
- Do not use a new battery with an old one.
- Do not use different types of batteries.
- When you do not use the unit for a long time, remove the batteries to avoid any damage caused by battery leakage and subsequent corrosion.
- Dry batteries will not be drained when another power source is connected.

To take out the batteries (see Fig. A-③)

To attach the battery compartment lid if it is accidentally detached (see Fig. A-④)

When to replace the batteries (see Fig. A-⑤)

- After the batteries have been used for a while, the BATT lamp may flicker with the playback sound when you turn up the volume; however this does not mean that you need to replace the batteries.
- The unit will play back normally for a while, even after the BATT lamp dims. However, replace the batteries as soon as you can. If you do not, subsequent recording will not be done correctly.

English

About this manual

The instructions in this manual are for 2 models. The TCM-200DV is the model used for illustration purposes.

TCM-	200DV	150
VOR	○	-
REC TIME /PLAY MODE	○	-
SPEED CONTROL	○	-
MIC jack	○	-

○: provided or supplied
-: not provided or not supplied

Note (TCM-200DV only)
Tapes recorded with the REC TIME/PLAY MODE switch in the DOUBLE position cannot be played properly on a tape recorder without the REC TIME/PLAY MODE switch function.

Getting Started

Preparing a Power Source

Choose one of the following power sources.

Dry Batteries (see Fig. A-②)

Make sure that nothing is connected to the DC IN 3V jack (this does not apply to TCM-150 for USA/Canada/Europe).

- 1 Open the battery compartment lid.
- 2 Insert two R6 (size AA) batteries with correct polarity and close the lid.

Notes

- Do not charge a dry battery.
- Do not use a new battery with an old one.
- Do not use different types of batteries.
- When you do not use the unit for a long time, remove the batteries to avoid any damage caused by battery leakage and subsequent corrosion.
- Dry batteries will not be drained when another power source is connected.

To take out the batteries (see Fig. A-③)

To attach the battery compartment lid if it is accidentally detached (see Fig. A-④)

When to replace the batteries (see Fig. A-⑤)

- After the batteries have been used for a while, the BATT lamp may flicker with the playback sound when you turn up the volume; however this does not mean that you need to replace the batteries.
- The unit will play back normally for a while, even after the BATT lamp dims. However, replace the batteries as soon as you can. If you do not, subsequent recording will not be done correctly.

English

About this manual

The instructions in this manual are for 2 models. The TCM-200DV is the model used for illustration purposes.

TCM-	200DV	150
VOR	○	-
REC TIME /PLAY MODE	○	-
SPEED CONTROL	○	-
MIC jack	○	-

○: provided or supplied
-: not provided or not supplied

Note (TCM-200DV only)
Tapes recorded with the REC TIME/PLAY MODE switch in the DOUBLE position cannot be played properly on a tape recorder without the REC TIME/PLAY MODE switch function.

Getting Started

Preparing a Power Source

Choose one of the following power sources.

Dry Batteries (see Fig. A-②)

Make sure that nothing is connected to the DC IN 3V jack (this does not apply to TCM-150 for USA/Canada/Europe).

- 1 Open the battery compartment lid.
- 2 Insert two R6 (size AA) batteries with correct polarity and close the lid.

Notes

- Do not charge a dry battery.
- Do not use a new battery with an old one.
- Do not use different types of batteries.
- When you do not use the unit for a long time, remove the batteries to avoid any damage caused by battery leakage and subsequent corrosion.
- Dry batteries will not be drained when another power source is connected.

To take out the batteries (see Fig. A-③)

To attach the battery compartment lid if it is accidentally detached (see Fig. A-④)

When to replace the batteries (see Fig. A-⑤)

- After the batteries have been used for a while, the BATT lamp may flicker with the playback sound when you turn up the volume; however this does not mean that you need to replace the batteries.
- The unit will play back normally for a while, even after the BATT lamp dims. However, replace the batteries as soon as you can. If you do not, subsequent recording will not be done correctly.

English

About this manual

The instructions in this manual are for 2 models. The TCM-200DV is the model used for illustration purposes.

TCM-	200DV	150
VOR	○	-
REC TIME /PLAY MODE	○	-
SPEED CONTROL	○	-
MIC jack	○	-

○: provided or supplied
-: not provided or not supplied

Note (TCM-200DV only)
Tapes recorded with the REC TIME/PLAY MODE switch in the DOUBLE position cannot be played properly on a tape recorder without the REC TIME/PLAY MODE switch function.

Getting Started

Preparing a Power Source

Choose one of the following power sources.

Dry Batteries (see Fig. A-②)

Make sure that nothing is connected to the DC IN

