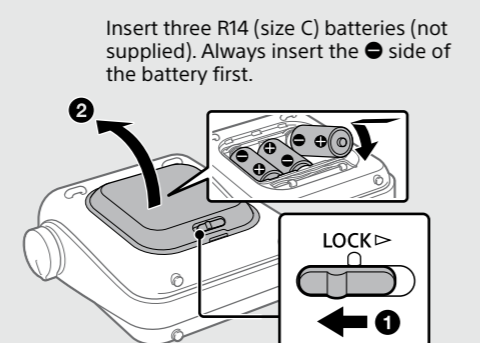


Register now for free updates at:
www.sony-europe.com/myproducts

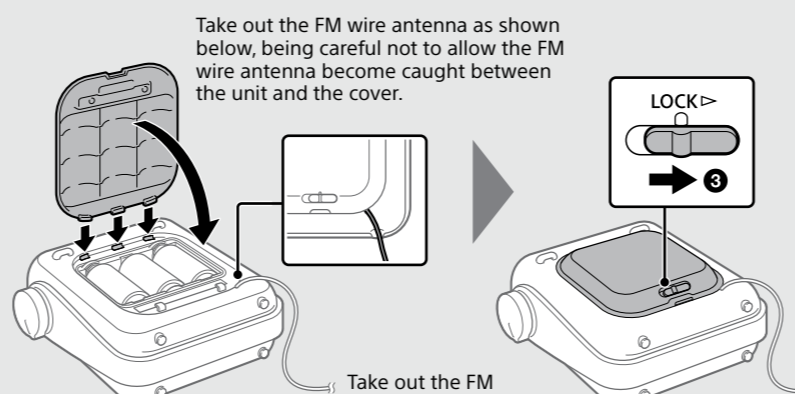
ICF-580

Getting Started

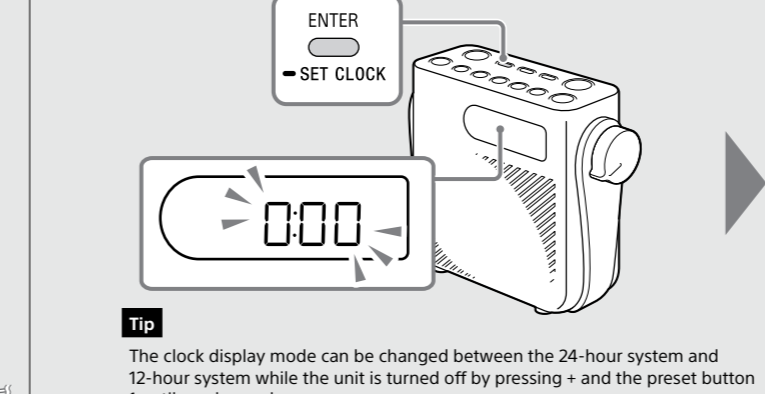
- 1 Install the batteries.**
Slide the lock/unlock switch in the direction of arrow (1), and open the battery compartment cover (2).



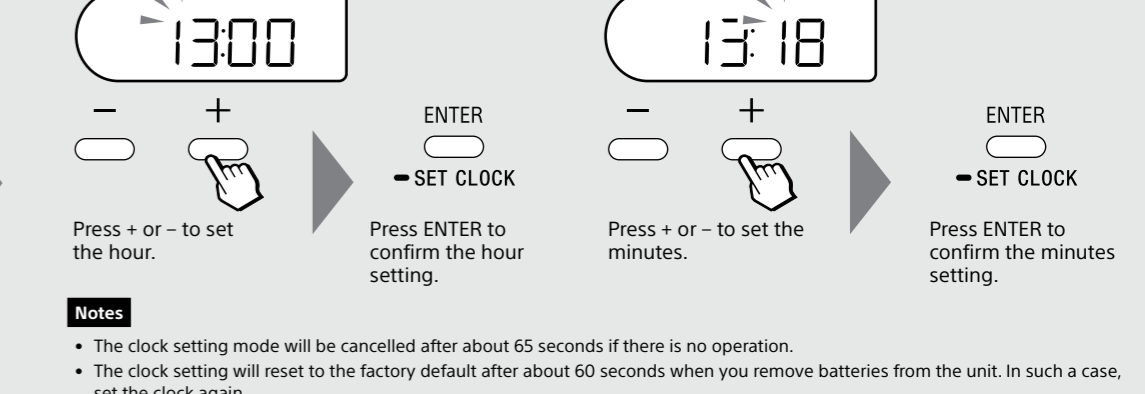
- 2 Set the clock.**
"0:00" (or "12:00 AM") will flash on the display when the batteries are inserted. Press and hold SET CLOCK until the hour indication starts flashing.



- Hour setting**
Press + or - to set the hour.



- Minute setting**
Press + or - to set the minutes.



Notes
• The clock setting mode will be cancelled after about 65 seconds if there is no operation.
• The clock setting will reset to the factory default after about 60 seconds when you remove batteries from the unit. In such a case, set the clock again.

Listening to the Radio

- 1 Turn on the radio.**
The radio is turned on and lights up on the display.
- 2 Select the band.**
Repeatedly pressing the button changes the band as follows:
FM → AM → FM → AM
- 3 Tune to the station you want.**
Display Example (when tuning to an FM station)
Currently selected band: **87.50 MHz**
- Tip**
Press + or - once when the clock is displayed. The frequency of the currently tuned station appears on the display for a few seconds.

Auto scan tuning
The unit automatically scans the frequency range for receivable stations. Once a station is found, the unit receives the radio signals of that station for about 3 seconds, and then continues to search for the next receivable station.

Manual tuning
You can tune to the desired station manually. Use the manual tuning to find a specific station, for example when you know the frequency of the station in advance.

Improving radio reception
When radio reception is poor, it can be improved by using the wire antenna (FM) or reorienting the unit itself (AM). If reception problems still persist, try changing the installation location to a place such as near a window or door.

For FM
Attach the suction cup (supplied) securely as shown below.

For AM
Reorient the unit itself to find good reception. (A ferrite bar antenna is built into the unit.)

How to attach the strap belt

Only one end of the strap belt is attached at the time of purchase. Attach the other end as shown below. To remove the belt, take it off in the reverse order.

Note
Fit the hole of the belt into the head of the projecting part securely. Otherwise, the belt may come off and the radio may fall from its hanging position.

Hanging the Radio

You can hang this radio as shown below, using the strap belt or a string (not supplied).

Notes
• Do not hang the radio in an unstable or easy to fall position.
• If using a string, choose one that is strong enough to support the weight of the radio and tie it lightly to prevent the radio from falling.
• Avoid excessive pressure onto the strap belt or string. Otherwise the belt or the string may break. Be careful not to apply excessive pressure to the belt or the string when hanging the radio.

How to take out or store the FM wire antenna

Taking out the wire antenna
Insert the tip of the FM wire antenna into the suction cup, pinch the tip of the wire antenna and remove it. Do not forcibly pull the wire cord itself as this may cause the wire antenna to break.

Storing the wire antenna
Adjust the angle of the FM wire antenna for good reception.

Notes
• When you close the battery compartment cover with the FM wire antenna in the wrong position, the water resistance performance cannot be maintained as well as when the wire antenna is caught between the unit and the battery compartment cover.
• When storing the wire antenna, guide it through the groove and take care it does not stick out from the cable housing.

Presetting stations

- Preset favorite stations to the 5 preset buttons. You can preset up to 5 stations each for FM and AM bands.
- 1 Tune to the station you want.**
Follow steps 1 to 3 in "Listening to the Radio" above.
- 2 Press and hold the desired preset button (1 - 5) until you hear a beep and the preset number appears on the display.**
Example: Presetting a tuned station to the preset button 1
Press and hold the button until you hear a beep.
- Tip**
Press + or - once when the clock is displayed. The frequency of the currently tuned station appears on the display for a few seconds.

To change the preset station
1 Tune to a new station.
2 Press and hold the preset button you want to change until you hear a beep.
The preset station on the selected button will be replaced by the new one.

Improving radio reception
When radio reception is poor, it can be improved by using the wire antenna (FM) or reorienting the unit itself (AM). If reception problems still persist, try changing the installation location to a place such as near a window or door.

For FM
Attach the suction cup (supplied) securely as shown below.

For AM
Reorient the unit itself to find good reception. (A ferrite bar antenna is built into the unit.)

Listening to a preset station

- 1 Select the FM or AM band, and then press the preset button to listen to the preset station.**
- Example: Listening to the preset station registered on the preset button 1**
Select the FM or AM band. Press the preset button 1.
- The frequency appears and the preset number lights up on the display, and you can listen to the station registered on the preset button 1.
- Tip**
If no station has been preset to the pressed button, "—" appears (below), and the unit returns to the frequency before the button was pressed.
- Note**
To prevent the preset from being changed by mistake, do not hold down the preset button for more than 2 seconds.

Guide to parts and controls

Unit

1 I/⏻ (power) button
2 Volume control
3 Strap belt
4 Speaker
5 Display
6 Preset buttons*
7 FM/AM button
8 TIMER SET/ON/OFF button (for countdown timer)
9 ENTER/SET CLOCK button (holding down the button enters the clock setting mode.)
10 +, - buttons
11 AUTO OFF button
12 String eyelets
13 Battery compartment cover

The date of manufacture and the serial number are indicated here.

Display

A Flashes when setting the countdown timer, and lights up while the countdown timer is in progress.
B Lights up or flashes when the battery power is low. Replace all the battery power is low. Replace all the battery with new ones when this indicator starts flashing.
C Lights up when the unit is receiving radio signals.
D Flashes when setting the auto off timer, and lights up when the auto off timer is in progress.
E Lights up when presetting the stations or countdown times to the preset buttons, or when selecting a preset station or preset countdown time.
F Lights up when the clock display mode is set to the 12-hour system. ("AM" and "PM" does not light up in the 24-hour system.)
G Frequency/time/message area
H Indicates the currently selected band.

Tip
You can see if the unit is receiving radio signals or not by checking the "C" indicator when the volume is at minimum level.

Convenient functions

Auto Off Timer
The radio automatically turns off after a set time (in minutes) has elapsed. With this function, you can avoid forgetting to turn off the power of the unit.

1 Press AUTO OFF.
The "AUTO OFF" indicator starts flashing and the default setting ("60") appears on the display. If you press AUTO OFF while the radio is off, the radio turns on automatically.

2 Press AUTO OFF repeatedly to select the desired setting while the "AUTO OFF" indicator is flashing.
Each time you press the button, the duration (in minutes) changes on the display as follows:
60 → 45 → 30 → 20 → OFF → 10

3 Press ENTER.
The selected setting is confirmed with a beep and the "AUTO OFF" indicator stops flashing. If you do not press ENTER within about 3 seconds, the currently selected setting is confirmed automatically.

Tip
You can check the time left until the radio turns off by pressing AUTO OFF again after setting the auto off timer.

To cancel the auto off timer
You can cancel the auto off timer using either of the following methods:
• Set the auto off timer to "OFF".
• Turn off the radio once, and then turn it on again.

To change the auto off timer while the auto off timer is in progress
Start over from step 1, and select the desired setting in step 2.

Countdown Timer
You can set the countdown timer to 1 minute intervals (maximum 90 minutes). When the countdown ends, an alarm buzzer reminds you that time is up.

1 Press TIMER SET/ON/OFF.
"1" (default setting) starts flashing on the display.

Tip
"1" will flash only when you have set the first time. Thereafter, the previously selected countdown time (in minutes) will flash.

2 Press + or - to set the countdown timer between 1 and 90 minutes while "1" and "1" (default setting) are flashing on the display.

3 Press TIMER SET/ON/OFF or ENTER.
"1" and the selected countdown time stop flashing and the countdown starts with a beep.
When the countdown ends, "1" and "0:00" start flashing and an alarm buzzer beeps for 60 minutes.

To stop the alarm buzzer
Press any button.

To stop the countdown timer
Press TIMER SET/ON/OFF. The countdown timer will be cancelled and the current time will appear on the display.

Water resistant feature (Read before using the radio)

Water resistance performance of this product
This product has a splash water resistance* specification that is equivalent to IPX4* water resistance as specified in "Degrees of protection against ingress of water" of the IEC60529. Degrees of protection provided by enclosures (IP Code)* Depending on usage, water entering the unit may cause a fire, electric shock or malfunction.

For maintaining water resistance performance
Check the following items and use the radio properly.
• The battery compartment cover plays a very important role in maintaining the water resistance performance. When using the radio, be sure that the cover is firmly closed and locked securely. When closing the cover, be careful not to allow foreign objects, such as debris, hair, etc., to be caught in between the rubber seal and the contact area of the back of the cover. If the cover does not firmly close because of such foreign objects, water may enter the battery compartment and cause a malfunction. When foreign objects adhere to the rubber seal or to the contact area of the back of the cover, wipe them off using a soft, lint-free cloth.
• Be careful not to allow the FM wire antenna become caught between the unit and the battery compartment cover when closing the cover after taking out the antenna.
• Water resistance performance may not be maintained if damage, dents or scratches occur on the surface of the rubber seal. In addition, depending on the length of time that the radio is used, the environment in which it is used, the rubber seal may deform or crack. To maintain water resistance performance, we recommend replacing the rubber seal once a year. (Replacement is a fee-based service.) For details, consult your nearest Sony dealer or service center.

Precautions
• Use the radio only on three R14 (size C) batteries (not included).
• Avoid exposure to temperature extremes, direct sunlight, sand, dust or mechanical shock. Never leave in a car parked in the sun.
• Should any solid object fall into the unit, remove the batteries, and have the unit checked by a qualified personnel before operating it any further.
• To clean the casing, use a soft dry cloth. Do not use any type of solvent, such as alcohol or benzene, which may damage the finish.
• Do not apply any shock or excessive impact to the unit. The glass material of the display may break and cracks and shards may cause injury. If the display is damaged, stop using the unit and do not touch the broken or cracked parts.
• When the battery power drops to a certain level, the sound may become weak or distorted, and the battery indicator (BATT) will start flashing on the display. After that, when the batteries become fully exhausted, the status of the indicator will change from "flashing" to "lit up", and the power will go off. If this happens, replace all the batteries with new ones.
• Be sure to replace the batteries within 60 seconds after the unit is turned off and the batteries are removed. Otherwise, the settings such as for the clock, preset countdown timer and preset stations will be initialized. Should this happen, perform the necessary settings again. Note that the battery indicator (BATT) will remain lit even after the batteries are replaced. The battery indicator disappears when you turn on the radio after battery replacement.
• Do not mix an old battery with a new one or mix different types of batteries.
• Remove the batteries from the unit if the unit is not to be used for an extended period of time. When using the radio again, perform the necessary settings, such as for the clock, preset stations and countdown times.
• Battery installed devices shall not be exposed to excessive heat such as sunshine, fire or the like.

In case of battery leakage
If battery fluid has leaked, do not touch the fluid with your bare hands. Battery fluid may remain inside the unit. Consult your nearest Sony dealer.
If battery fluid gets into your eyes, do not rub your eyes, as blindness may occur. Quickly wash your eyes with plenty of clean water and immediately seek medical attention.
If battery fluid gets onto your body or clothing, burns or injury may occur. Quickly wash off with clean water, and seek medical attention if skin inflammation or injury occurs.
If you have any questions or problems concerning your unit, please consult your nearest Sony dealer.

Troubleshooting

Should any problems persist after you have made the following checks, consult your nearest Sony dealer.
Display is dim, or no indication is displayed.
• The radio is being used in extremely high or low temperatures or in a place with excessive moisture.
Very weak or interrupted sound, or unsatisfactory reception.
• Replace all the batteries with new ones if they are exhausted.
• To improve radio reception, change the installation location to a place such as near a window or door.
There is noise in the speaker output.
• If a mobile phone is placed close to the radio, a loud noise may be heard from the radio. Keep the phone away from the radio.
Batteries become exhausted very quickly.
• Be sure to turn off the radio when not using it. See "Battery life" under "Specifications" for details about the estimated battery life.
• When the BATT indicator starts flashing, replace all the batteries with new ones.
• Batteries have a recommended use-by date for proper use. When using expired batteries, battery life will be extremely short. Check the use-by date on the batteries and if they are expired, replace them with new ones.
The battery indicator (BATT) remains lit even after the batteries are replaced.
• Turn off the radio once, and then turn it on again.
• Check if all batteries are new ones.
• You may have held down the preset button to which the station was preset, causing the station to be replaced by a new one. Press the desired station again.

Specifications

Time display
12-hour system/24-hour system (selectable)

Frequency range
FM 87.5 MHz - 108 MHz (50 kHz step)
AM 531 kHz - 1602 kHz (9 kHz step)

Intermediate frequency
FM: 128 kHz
AM: 45 kHz

Speaker
Approx. 7.7 cm dia., 8 Ω, monaural

Audio power output
500 mW

Power requirements
4.5 V DC, three R14 (size C) batteries

Battery life*
Approx. 100 hours (FM reception)
Approx. 100 hours (AM reception)

* When listening through the speaker on Sony (LR145G) alkaline batteries. Measured by JEITA (Japan Electronics and Information Technology Industries Association) standards. The actual battery life may vary depending on usage and circumstances.

Dimensions (W/H/D)
Approx. 145 mm × 128.4 mm × 62.1 mm

Mass
Approx. 375 g (excl. batteries)
Approx. 575 g (incl. batteries)

Quantity
Unit: 1
Strap belt: 1
Suction cup (1)

Design and specifications are subject to change without notice.