



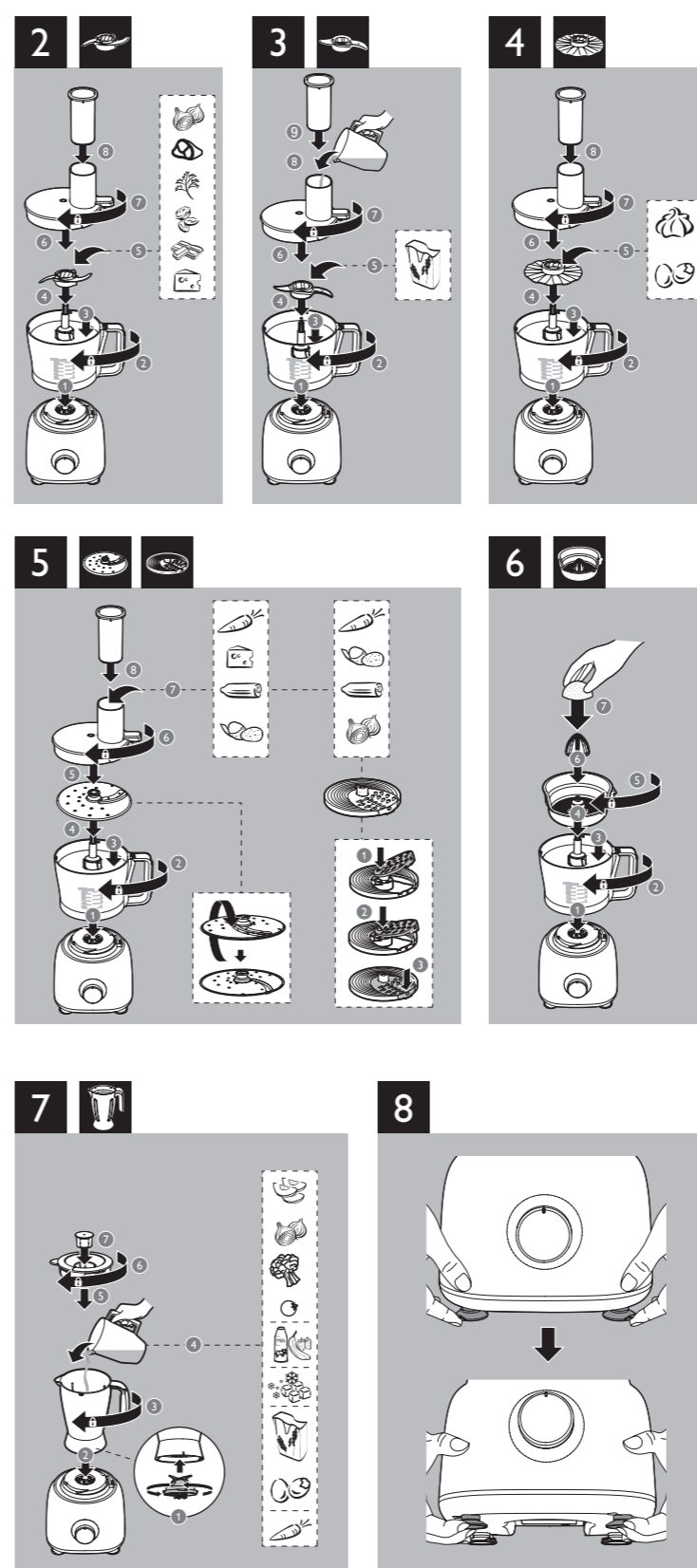
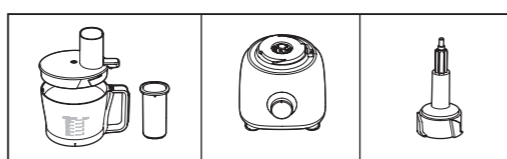
EN User manual
RU Руководство пользователя

KK Колданушының нұсқасы
UK Посібник користувача

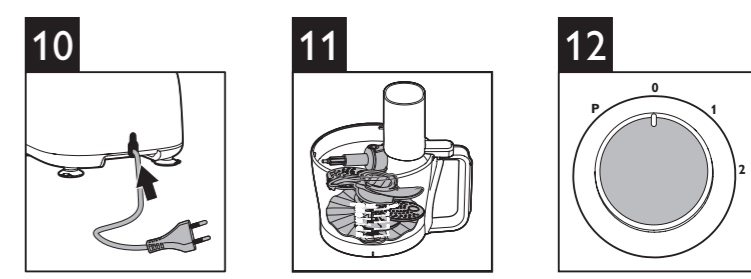
PHILIPS



		(MAX)	(MAX)	
	5 x 1 sec	500 g	P	
	5 x 1 sec	500 g	P/2	
	30 sec	50 g	P	
	60 sec	250 g	2	
	45 sec	250 g	2	
	30 sec	200 g	2	
	2-3 min	500 g	1	
		360 ml		
	60-180 sec	350 ml	1	
	60-180 sec	4 pcs	1	
	30 sec	500 g	1	
	30 sec	500 g	1	
	30 sec	2 pcs	1	
	30 sec	300 g	1	
	30 sec	500 g	1	
	30 sec	200 g	1	
	30 sec	200 g	1	
	30 sec	2 pcs	1	
	30 sec	500 g	1	
	4 min	1 kg	1	
	20 sec	500 g	1	
	1 min	1 L	2	
	1 min	1 L	2	
	1 min	1 L	2	
	P x 9	6 x	P	
	3 min	400 g	2	
		600 ml		



	✓	✓	✗		✓
	✓	✓	✗		✓
	✓	✓	✓		✓
	✓	✓	✓		✓
	✓	✓	✓		✓
	✓	✓	✓		✓
	✓	✓	✗		✓
	✓	✓	✗		✓
	✓	✓	✗		✗
	✓	✓	✗		✗



! Caution

- Be careful when you handle the slicing blade of disc. It has a very sharp cutting edge.
- Never use the disc to process hard ingredients, like ice cubes.
- Do not exert too much pressure on the pusher when you press ingredients into the feed tube.

≡ Note

- Pre-cut large ingredients into chunks that fit in the feeding tube.

- Turn the bowl clockwise to fix it on the motor unit, and then put the tool holder in the bowl.
↳ When the bowl is fixed correctly, you hear a click.
- Put the disc on the shaft. For inserts (HR7627 and HR7628 only), place an insert in the insert holder as indicated below, then place the insert holder with insert on the shaft.
① Place the opening of the insert over the shaft of the insert holder.
② Push the opening of the insert over the projection on the shaft.
③ Press the insert onto the insert holder until it locks in position with a click.
- Put the lid on the bowl, and then turn the lid clockwise to fix it.
↳ When the lid is assembled correctly, you hear a click and the lid is fixed to the bowl handle.
- Put the ingredients into the feeding tube with the pusher. Fill the feeding tube evenly for the best results. When you have to process a large amount of ingredients, process small batches and empty the bowl between batches.
- Connect the power plug to the power supply.
- Check the preparation time, the maximum amount and the speed setting required for the ingredients in Table 1. Select the speed that matches the color of the accessory.
- After use, turn the speed selector to 0, and then unplug the appliance.

Citrus press (HR7629 only)

Before you start, make sure you assemble according to Fig. 6. You can use the citrus press to squeeze citrus fruits.

- Turn the bowl clockwise to fix it on the motor unit, and then put the tool holder in the bowl.
↳ When the bowl is fixed correctly, you can hear a click.
- Put the sieve for citrus press on the tool holder in the bowl. Make sure that the projection on the sieve is locked in the slot of the bowl handle.
↳ When the sieve is fixed correctly, you can hear a click.
- Put the cone on the sieve.
- Connect the power plug to the power supply.
- Check the maximum amount required for the ingredients in Table 1. Turn the knob to speed 1.
↳ The cone starts rotating.
- Press the citrus fruit onto the cone.
- Stop pressing from time to time to remove the pulp from the sieve. When you finish pressing or when you want to remove the pulp, turn the knob to 0 and remove the bowl from the appliance with the sieve and cone on it.

Blender (HR7628 and HR7629 only)

Before you start, make sure you assemble according to Fig. 7. The blender is intended for:

- Blending fluids, like dairy products, sauces, fruit juices, soups, mixed drinks, and shakes.
- Mixing soft ingredients, like pancake batter.
- Pureeing cooked ingredients, like baby food.
- Crushing ice.

≡ Note

- Do not exert too much pressure on the handle of the blender jar.
- Never open the lid to put your hand or any object in the jar while the blender is running.
- Always assemble the sealing ring onto the blade unit before you attach the blade unit to the blender jar.
- To add liquid ingredients during processing, pour them into the blender jar through the feeding tube.
- Pre-cut solid ingredients into small pieces before you process them.
- If you want to prepare a large quantity, process small batches of ingredients instead of a large quantity at once.
- To avoid spillage: When you process a liquid that is hot or tends to foam (for example, milk), do not put more than 1 liter of liquid in the blender jar.
- If you are not satisfied with the result, switch off the appliance and stir the ingredients with a spatula. Remove some of the contents to process a smaller quantity or add some liquid.

- Turn the blade unit on the blender jar.
- Place the blender jar on the motor unit and turn it clockwise to fix it.
↳ When the jar is fixed correctly, you hear a click.
- Put the ingredients in the blender jar within the maximum level indication.
- Place the lid on the blender jar, and then turn it clockwise to fix it.
- Connect the power plug to the power supply.
- Check the preparation time, the maximum amount and the speed setting required for the ingredients in Table 1. Turn the knob to the desired speed setting. To crush ice, turn the knob to P. Press the button again to stop.
- After use, turn the knob to 0, and then unplug the appliance.

*** Tip**

- How to remove the ingredients that stick to the side of the blender jar? 1. Switch off the appliance, and then unplug it. 2. Open the lid and then use a spatula to remove the ingredients from the side of the jar. 3. Keep the spatula at least 2 cm from the blade.

Mini Chopper accessory (Optional)

You can order a mini chopper (under service code number 9965 100 57198/9965 100 52997) from your Philips dealer or a Philips service center as an extra accessory. You can use the mini chopper to chop coffee beans, peppercorns, nuts, herbs etc. Use speed 2 and process for 30 sec. Do not exceed the maximum level indicated on the mini chopper. For best results when processing beef, please use refrigerated beef cubes. Use max of 100g beef cubes at speed P for 5 sec.

Quick cleaning

You can follow the following steps to clean the food processor bowl and blender jar easier.

≡ Note

- Make sure that the blade is assembled in the bowl if you clean the food processor bowl.

- Pour lukewarm water (not more than 0.5 liters) and a few drops of washing-up liquid into the food processor bowl or blender jar.
- Place the lid on the food processor bowl or blender jar, and then turn it clockwise to fix it.
- Turn the knob to P. Let the appliance run for 30 seconds or until the food processor bowl or blender jar is clean.
- After use, turn the knob to 0, and then unplug the appliance.
- Detach the blender jar or food processor bowl and rinse it with clean water.

Cleaning and storage

! Warning

- Before you clean the appliance, unplug it.

! Caution

- Make sure that the cutting edges of the blades and discs do not come into contact with hard objects. This may cause the blades to get blunt.
- The cutting edges are sharp. Be careful when you clean the blade unit of the food processor; the blade unit of the blender and the discs.

Specifications are subject to change without notice
© 2016 Koninklijke Philips N.V.
All rights reserved.
3140 035 30334



English

1 Important

Congratulations on your purchase and welcome to Philips! To fully benefit from the support that Philips offers, register your product at www.philips.com/welcome. Read this user manual carefully before you use the appliance, and save the user manual for future reference.

Danger

- Do not immerse the motor unit in water nor rinse it under the tap.

Warning

- Never use your fingers or an object to push ingredients into the feeding tube while the appliance is running. Only use the pusher.
- Before you connect the appliance to the power, make sure that the voltage indicated on the bottom of the appliance corresponds to the local power voltage.
- Never connect this appliance to a timer switch, to avoid a hazardous situation.
- Do not use the appliance if the power cord, the plug, protecting cover, rotating sieve or any other parts are damaged or has visible cracks.
- If the power cord is damaged, you must have it replaced by Philips, a service center authorized by Philips, or similarly qualified persons to avoid a hazard.
- This appliance shall not be used by children. Keep the appliance and its cord out of reach of children.
- This appliance can be used by persons with reduced physical, sensory or mental capabilities or lack of experience and knowledge if they have been given supervision or instruction concerning use of the appliance in a safe way and if they understand the hazards involved.
- For their safety, do not allow children to play with the appliance.
- Never let the appliance run unattended.
- If food sticks to the wall of the blender jar or bowl, switch off the appliance and unplug it. Then use a spatula to remove the food from the wall.
- Be careful when you are emptying the bowl, handle or clean the discs, the blade units and the juicer sieve. The cutting edges are very sharp.
- Do not touch the blades, especially when the appliance is plugged in. The blades are very sharp.
- If the blades get stuck, unplug the appliance before you remove the ingredients that block the blades.
- Be careful if hot liquid is poured into the food processor or blender as it can be ejected out of the appliance due to a sudden steaming.
- This appliance is intended for household use only.

Caution

- Never switch off the appliance by turning the blender jar; the bowl, or their lids. Always switch off the appliance by turning the speed selector to 0 or OFF.
- Unplug the appliance immediately after use.
- Always wait until the moving parts stop running, then switch off and unplug the appliance before opening the lid and reaching into any of the parts that move in use.
- Always switch off and unplug the appliance if it is left unattended, and before assembling, disassembling, cleaning and changing accessories, or approaching parts that move in use.
- Thoroughly clean the parts that come into contact with food before you use the appliance for the first time. Refer to the instructions and table for cleaning given in this manual.
- Never use any accessories or parts from other manufacturers that Philips does not specifically recommend. If you use such accessories or parts, your guarantee becomes invalid.
- Do not exceed the maximum level indication on the bowl or the jar. Follow the quantities, processing time and speed as indicated in the user manual.
- Let hot ingredients cool down (< 80°C) before processing them.
- Always let the appliance cool down to room temperature after each batch that you process.
- Certain ingredients such as carrots may cause discolorations on the surface of the parts. This does not have a negative effect on the parts. The discolorations usually disappear after some time.
- Noise level:** Lc = 85 dB [A]

Electromagnetic fields (EMF)
This Philips appliance complies with all applicable standards and regulations regarding exposure to electromagnetic fields (EMF). If handled properly and according to the instructions in this user manual, the appliance is safe to use based on scientific evidence available today.

Recycling
Your product is designed and manufactured with high quality materials and components, which can be recycled and reused. When you see the crossed-out wheel bin symbol attached to a product, it means the product is covered by the European Directive 2002/96/EC: Never dispose of your product with other household waste. Please inform yourself about the local rules on the separate collection of electrical and electronic products. The correct disposal of your old product helps prevent potentially negative consequences on the environment and human health.

2 Introduction

Congratulations on your purchase and welcome to Philips! To fully benefit from the support that Philips offers, register your product at www.philips.com/welcome. This appliance is equipped with a built-in safety lock. You can only switch on the appliance after you correctly assemble the following parts on the motor unit:

- the food processor bowl and its lid, or
- the blender jar and its lid (HR7628, HR7629 only), or
- the citrus press (HR7629 only)

If these parts are assembled correctly, the built-in safety lock is unlocked. For recipes to use with your food processor, go to www.philips.com/kitchen

3 Food processor

! Warning

- Never use your fingers or an object to push ingredients into the feeding tube while the appliance is running. Only use the pusher.

Blade unit
Before you start, make sure you assemble according to Fig. 2. You can use the blade unit to chop, mix, blend, or puree ingredients. You can also use it to mix and blend cake batters.

! Caution

- Do not use the blade unit to chop hard ingredients, like coffee beans, turmeric, nutmeg, and ice cubes, as this may cause the blade to get blunt.

≡ Note

- Do not let the appliance run too long when you chop (hard) cheese or chocolate. Otherwise these ingredients become too hot, start to melt, and turn lumpy.
- Pre-cut large pieces of food into pieces of approx. 3 x 3 x 3 cm.

- Turn the bowl clockwise to fix it on the motor unit, and then put the tool holder in the bowl.
↳ When the bowl is fixed correctly, you hear a click.
- Put the blade unit on the tool holder.
- Put the ingredients in the bowl.
- Put the lid on the bowl, and then turn the lid clockwise to fix it.
↳ When the lid is assembled correctly, you hear a click and the lid is fixed to the bowl handle.
- Put the pusher into the feeding tube.
- Connect the power plug to the power supply.
- Check the preparation time, the maximum amount, and the speed setting required for the ingredients in Table 1. Turn the knob to the desired speed setting.
- After use, turn the knob to 0, and then unplug the appliance.

*** Tip**

- When you chop onions, turn the knob to P a few times to prevent the onions from becoming too finely chopped.
- How to remove food that sticks to the blade or to the inside of the bowl? 1. Switch off the appliance, and then unplug it. 2. Remove the lid from the bowl. 3. Remove the ingredients from the blade or from the side of the bowl with a spatula.

Kneading accessory

Before you start, make sure you assemble according to Fig. 3. You can use the kneading accessory to knead yeast dough for bread and pizzas. You need to adjust the amount of liquid to form the dough according to the humidity and temperature condition.

≡ Note

- Do not use the kneading accessory to blend cake batters. Use the blade unit for this job.
- Always put the kneading accessory in the bowl before you add the ingredients.

- Turn the bowl clockwise to fix it on the motor unit, and then put the tool holder in the bowl.
↳ When the bowl is fixed correctly, you hear a click.
- Put the kneading accessory on the tool holder.
- Put the ingredients in the bowl.
- Put the lid on the bowl, and then turn the lid clockwise to fix it.
↳ When the lid is assembled correctly, you hear a click and the lid is fixed to the bowl handle.
- Put the pusher into the feeding tube.
- Connect the power plug to the power supply.
- Turn the knob to the 1 position.
- Check the preparation time, the maximum amount and the speed setting required for the ingredients in Table 1.
- After use, turn the knob to 0, and then unplug the appliance.

Discs and Inserts

Before you start, make sure you pick your desired disc from following and assemble according to Fig. 4 and Fig. 5.

- Emulsifying disc
- Insert for fine (HR7627 and HR7628 only)
- Insert for granulating (HR7627 and HR7628 only)
- Reversible slicing / shredding disc (coarse) (HR7629 only)

ТАМОЖЕННЫЙ СОЮЗ

СЕРТИФИКАТ СООТВЕТСТВИЯ

№ ТС RU C-NL.AЯ46.B.60619
Серия RU № 0055094

ОРГАН ПО СЕРТИФИКАЦИИ Орган по сертификации "РОСТЕСТ- Москва", Адрес: 119049, г. Москва, улица Житная, д. 14, стр. 1; 117418, Москва, Нахимовский просп., 31 (фактический), Телефон: (499) 1292311, (495) 6682893, Факс: (495) 6682893, E-mail: office@rostest.ru, Аттестат рег. № РОСС RU.0001.10АЯ46, выдан 07.05.2013; Росаккредитация

ЗАЯВИТЕЛЬ Уполномоченное изготовителем лицо: Общество с ограниченной ответственностью "Филипс" по договору № 29/06/12/TR от 29.06.2012 г., Адрес: 123022, г. Москва, ул. Сергея Макеева, д. 13, Россия, ОГРН: 1027700044074, Телефон: +74959379300, Факс: +74959379300, E-mail: info.ru@philips.com, support.hotline.moscow@philips.com

ИЗГОТОВИТЕЛЬ "PHILIPS CONSUMER LIFESTYLE B.V.", Адрес: Tussendiepen 4, 9206 AD Drachten, The Netherlands, Нидерланды. Предприятия изготовителя согласно приложению (бланк № 0055990)

ПРОДУКЦИЯ Кухонные комбайны электрические "PHILIPS", модели согласно приложению, (бланк № 0055991). Директивы № 2006/95/ЕС, № 2004/108/ЕС. Серийный выпуск.

КОД ТН ВЭД ТС 8509 40 000 0

СООТВЕТСТВУЕТ ТРЕБОВАНИЯМ Технического регламента Таможенного союза ТР ТС 004/2011 "О безопасности низковольтного оборудования"; ТР ТС 020/2011 "Электромагнитная совместимость технических средств"

СЕРТИФИКАТ ВЫДАН НА ОСНОВАНИИ Протоколы испытаний №№ 1004ТС-ЭР/13, 1004ТС-БР/13, 1005ТС-ЭР/13, 1005ТС-БР/13 от 15.11.2013 г., Испытательная лаборатория по параметрам ЭМС, эргономики и безопасности ЗАО НАУЧНО-ИСПЫТАТЕЛЬНОГО ЦЕНТРА "САМТЭС", рег. № РОСС RU.0001.21МЭ40 (19.06.2009 - 19.06.2014); Акт анализа состояния производства № 25-220 от 15.08.2013 г. ОС "Ростест-Москва" (рег. № РОСС RU.0001.10АЯ46 от 07.05.2013 по 07.06.2015).

ДОПОЛНИТЕЛЬНАЯ ИНФОРМАЦИЯ Срок службы указан изготовителем в документации на продукцию. Условия хранения стандартные при нормальных значениях климатических факторов внешней среды. Срок хранения изделия не установлен.

СРОК ДЕЙСТВИЯ 15.11.2013 ПО 14.11.2016 ВКЛЮЧИТЕЛЬНО

Руководитель (уполномоченное лицо) органа по сертификации *А.Б. Савкин* (инициалы, фамилия)
Эксперт (эксперт-аудитор) (эксперты (эксперты-аудиторы)) *О.Н. Круглова* (инициалы, фамилия)

ТАМОЖЕННЫЙ СОЮЗ

ПРИЛОЖЕНИЕ

К СЕРТИФИКАТУ СООТВЕТСТВИЯ № ТС RU C-NL.AЯ46.B.60619
Серия RU № 0055991

Перечень продукции, на которую распространяется действие сертификата соответствия

Код ТН ВЭД ТС	Наименование, типы, марки, модели однородной продукции, составные части изделия или комплекса	Обозначение документации, по которой выпускается продукция
8509 40 000 0	Кухонные комбайны электрические "PHILIPS", модели: HR7605/xx HR7620/xx HR7625/xx HR7627/xx HR7628/xx HR7629/xx HR7761/xx HR7762/xx HR7767/xx HR7769/xx HR7771/xx HR7772/xx HR7778/xx HR7782/xx HR7830/xx TCK830/xx (где x – любая цифра от 0 до 9, буква от А до Z и/или ее отсутствие, обозначающие модификации приборов с разным дизайном и комплектацией)	

СРОК ДЕЙСТВИЯ 15.11.2013 ПО 14.11.2016 ВКЛЮЧИТЕЛЬНО

Руководитель (уполномоченное лицо) органа по сертификации *А.Б. Савкин* (инициалы, фамилия)
Эксперт (эксперт-аудитор) (эксперты (эксперты-аудиторы)) *О.Н. Круглова* (инициалы, фамилия)

ТАМОЖЕННЫЙ СОЮЗ

ПРИЛОЖЕНИЕ

К СЕРТИФИКАТУ СООТВЕТСТВИЯ № ТС RU C-NL.AЯ46.B.60619
Серия RU № 0055990

Перечень предприятий-изготовителей продукции, на которую распространяется действие сертификата соответствия

Полное наименование предприятия-изготовителя	Адрес (место нахождения)
"PHILIPS CONSUMER LIFESTYLE B.V.", Нидерланды	Tussendiepen 4, 9206 AD Drachten, The Netherlands, Нидерланды
Предприятия-изготовители:	
"Osterreichische Philips Industrie GmbH", Австрия	Zweig-heideriassung Klagenfurt, Konongsbergerstrasse, 11 A-9020, Австрия (AT)
"Videoton MBKE Electronics Ltd.", Венгрия	Kaposvar 7400, Венгрия (HU)
"Videoton Elektro-Plast Kft.", Венгрия	Izzo Utca 3, 7400, Kaposvar, Венгрия (HU)
"Rosti (Polska) SP. z.o.o.", Польша	ul. Elewatorska 29, Bialystock, Польша (PL)
"Ya Hong Electronics (Dongguan) Co. Ltd.", Китай	188 Industrial District, Ping Shan Administrative District, Tang Shia Town, Dongguan, Guangdong, Китай (CN)
"Artreal (Hui Yang) Manufacturing Ltd.", Китай	Huicheng District Huizhou City, Guangdong, Китай (CN)
"Huiyang Allan Plastic & Electric Industrial Co. Ltd.", Китай	Lilin, Huicheng District, Huizhou City, Guangdong, Китай (CN)
"Erna Mas Makine Tic Ve San a.s.", Турция	Orta Yolu 400m Sabanozu Cankin, Турция (TR)

СРОК ДЕЙСТВИЯ 15.11.2013 ПО 14.11.2016 ВКЛЮЧИТЕЛЬНО

Руководитель (уполномоченное лицо) органа по сертификации *А.Б. Савкин* (инициалы, фамилия)
Эксперт (эксперт-аудитор) (эксперты (эксперты-аудиторы)) *О.Н. Круглова* (инициалы, фамилия)

<p>Кухонный комбайн Ас комбайны HR7627/00 / HR7628/00 / HR7629/90 220-240V~ 50/60Hz 650W</p> <p>Импортер на территорию России и Таможенного Союза: ООО "ФИЛИПС", Российская Федерация, 123022 г. Москва, ул. Сергея Макеева, д.13, тел. +7 495 961-1111</p> <p>Изготовитель: "Филипс Консьюмер Лайфстайл Б.В.", Туссендиепен 4, 9206 АД, Драхтен, Нидерланды Для бытовых нужд</p>	<p>Ресей және Кендік Одақ территориясына импорттаушы: "ФИЛИПС" ЖШК, Ресей Федерациясы, 123022 Мәскеу қаласы, Сергей Макеев көшесі, 13-үй, тел. +7 495 961-1111</p> <p>Өндіруші: "Филипс Консьюмер Лайфстайл Б.В.", Туссендиепен 4, 9206 АД, Драхтен, Нидерланды Тұрмыстық қажеттіліктерге арналған</p>
---	--