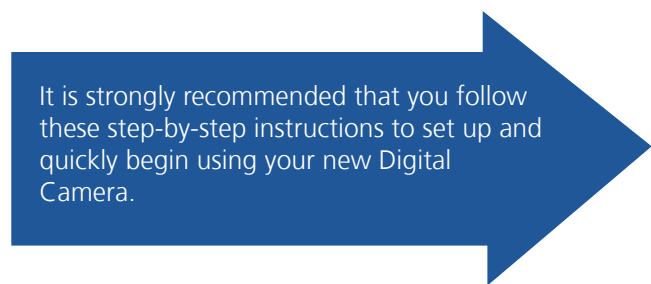


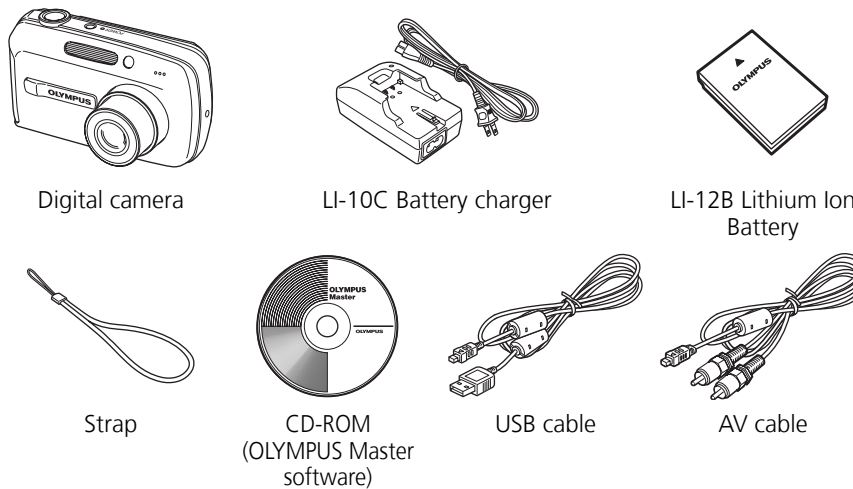
It is strongly recommended that you follow these step-by-step instructions to set up and quickly begin using your new Digital Camera.



STEP

1 UNPACK THE BOX CONTENTS

Gather the items illustrated below to complete the procedures that follow.



The following items are also included in the Digital Camera package: Basic Manual, warranty card, Advanced Manual on CD-ROM and registration card.

STEP

2 REVIEW THE DOCUMENTATION

Quick Start Guide (this document)
Getting started with your digital camera.

Quick Reference Guide (reverse side of this document)
Quick guide to using common features and functions.

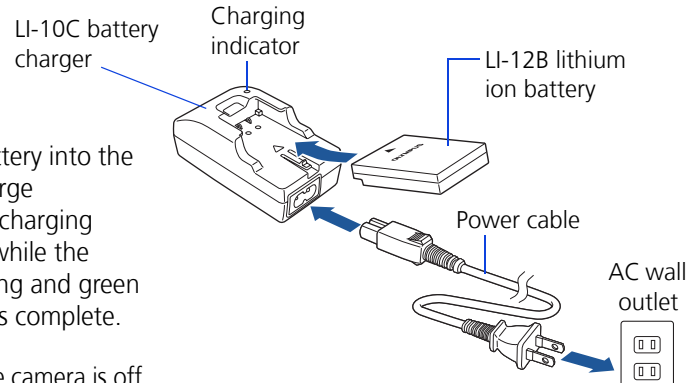
Basic Manual (printed booklet)
Guide to mastering camera basics.

Advanced Manual (CD-ROM)
Detailed instructions on all camera features and functions.

Software Installation Guide (separate document on OLYMPUS Master CD-ROM)
Detailed instructions on installing the OLYMPUS Master software.

STEP

3 INSERTING THE BATTERY

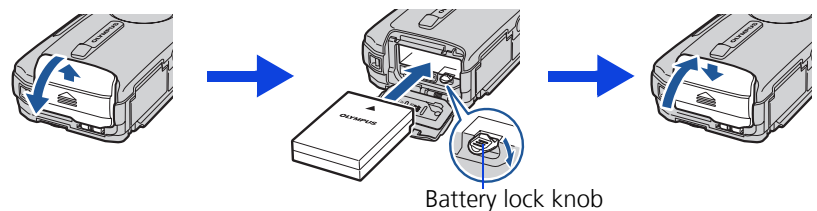


a. Insert the battery into the charger and charge completely. The charging indicator is red while the battery is charging and green when charging is complete.

b. Make sure the camera is off.

c. Open the battery compartment/connector cover on the side of the camera and insert the battery until the battery lock knob clicks into place.

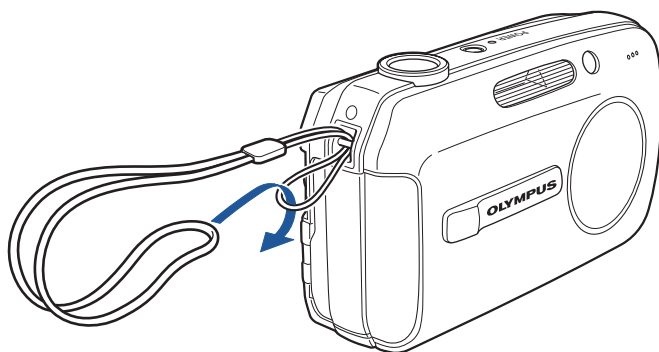
d. Close the cover.



Battery lock knob

STEP

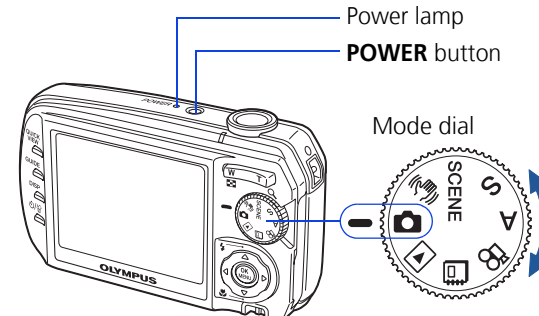
4 ATTACH THE STRAP



STEP

5 TURN ON THE CAMERA

Set the mode dial to and press the **POWER** button. The power lamp lights green, the monitor turns on, and the lens extends.



Note: After use, press the **POWER** button to turn off the camera. The power lamp and monitor turn off, and the lens retracts.

STEP

6 SET THE DATE AND TIME

a. With the camera on, press .

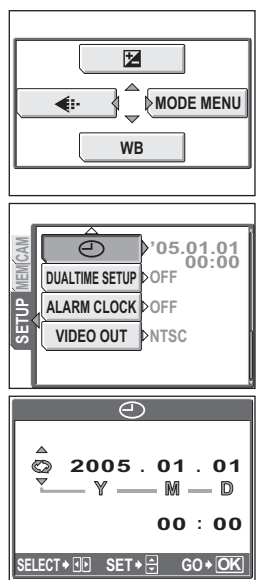
b. Press to select [MODE MENU].

c. Press to select the [SETUP] tab and press .

d. Press to select and press .

e. Press to set each item and press to move to the next item.

f. Press when you have finished entering the date and time.

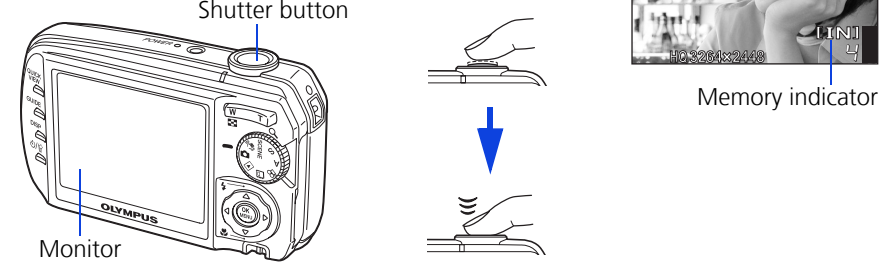


STEP

7 TAKING A PICTURE

a. Place the AF target mark on your subject using the AF target mark.

b. Press the shutter button halfway to lock the focus and exposure, then press the shutter button completely to take the picture.



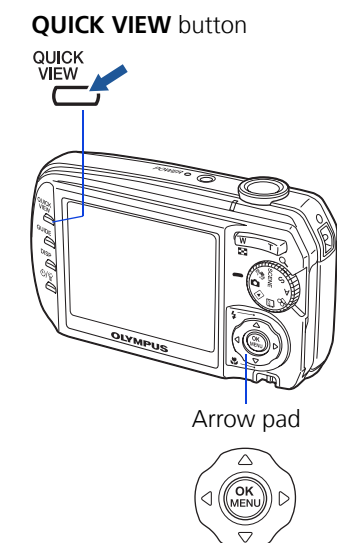
• Pictures are automatically stored in the internal memory ([IN] is displayed on the monitor). Alternately, you can store your pictures on an xD-Picture Card (sold separately). While the card is inserted, [xD] is displayed on the monitor and all pictures are stored on the card.

STEP

8 REVIEWING A PICTURE

a. Press the **QUICK VIEW** button. The last picture taken is displayed.

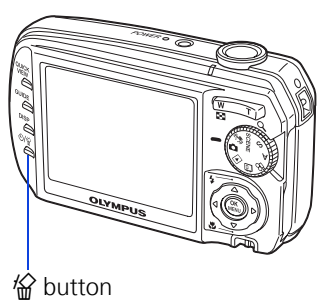
b. Press on the arrow pad to display the picture you want.



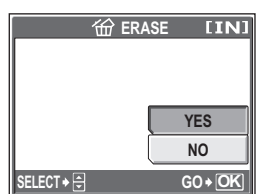
STEP

9 ERASING A PICTURE

a. Display the picture you want to erase, and press the button.



b. Press to select [YES], and press .

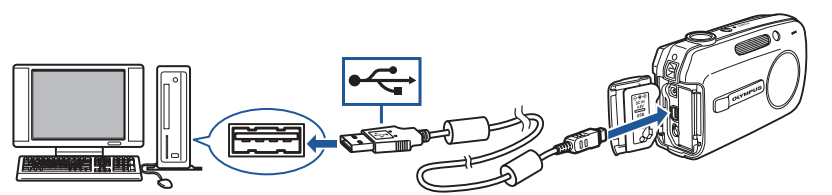


STEP

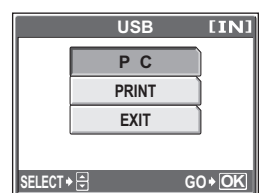
10 CONNECTING THE CAMERA TO A COMPUTER

a. Make sure the camera is off.

b. Connect the camera to the computer using the USB cable (included). The camera turns on automatically.



c. Press to select [PC] on the camera monitor, and press .



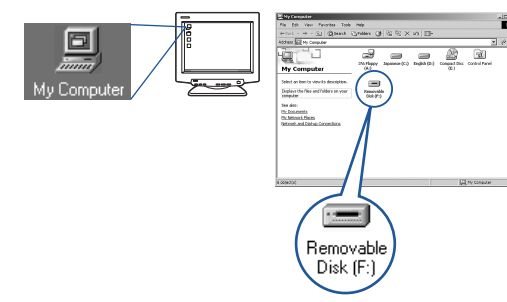
STEP

11 VERIFY CAMERA CONNECTION

WINDOWS:

a. From the desktop ("Start" menu for XP), open "My Computer".

b. Verify that the "Removable Disk" icon representing the camera is displayed.



MACINTOSH:

Verify that the "NO_NAME" icon representing the camera is displayed.



• The above steps confirm that the camera has been connected properly. You can transfer your images using the standard drag and drop procedure and use the OLYMPUS Master software (included) to enhance your digital imaging experience.

STEP

12 ABOUT THE CD-ROM DISCS



Now that you've mastered the basic functionality of your Olympus Digital Camera, you are ready to begin exploring the possibilities that digital photography brings to your computer. Activities such as photo editing, printing and much more are only steps away!

CD-ROM1

OLYMPUS Master software: Download pictures from the camera, view, organize, retouch, e-mail and print your digital photos and movies and more! This CD also contains the complete software users manual in Adobe Acrobat (PDF) format.

CD-ROM2

Advanced Manual: A complete camera guide in Adobe Acrobat (PDF) format. This manual contains detailed instructions on the camera's features and functions which are not covered in the printed Basic Manual or Quick Start/Quick Reference Guides.

STEP

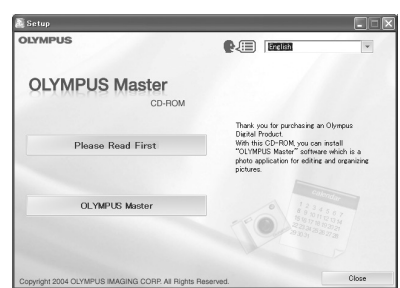
13 INSTALLING THE CAMERA SOFTWARE

a. Insert the OLYMPUS Master CD-ROM into your computer's CD-ROM drive.

b. For Windows:
Click the "OLYMPUS Master" button in the "Setup" window.

For Macintosh:

Double-click the "Installer" icon.



c. Follow the on-screen instructions. For more details, click "Please Read First".

Please refer to the Quick Reference Guide on the reverse side of this sheet to familiarize yourself with the commonly used features and functions of your Olympus Digital Camera.

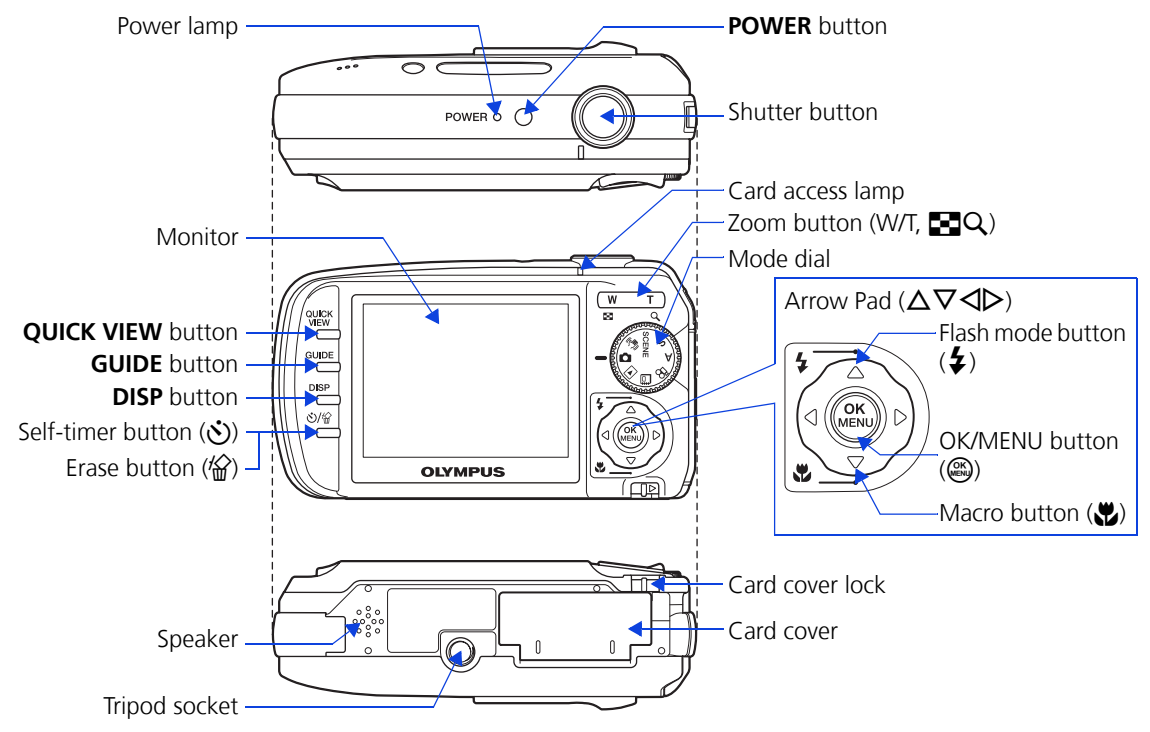
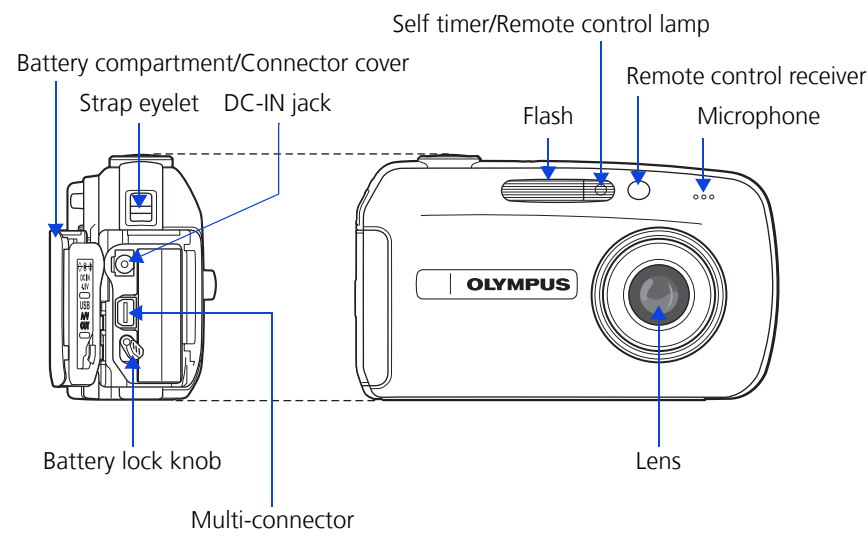
Quick Reference Guide

Stylus 800

INDEX

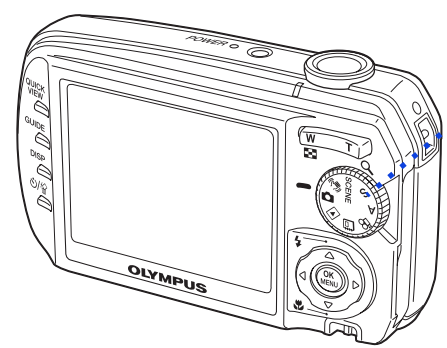
1. Camera Diagram and Controls
2. Mode Dial
3. Using the Zoom
4. How to Use the Autofocus
5. Flash Modes
6. Image Quality Modes
7. Recording a Movie
8. Viewing Pictures/Movies on a TV
9. How to Erase All Pictures
10. E-mailing a Picture
11. Printing a Picture

1 CAMERA DIAGRAM AND CONTROLS

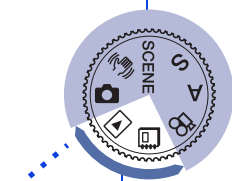


2 MODE DIAL

Turn the mode dial to the mode you want.



Shooting modes:
Set the mode dial to one of these positions to take pictures or movies.



Playback modes:
Set the mode dial to one of these positions to view pictures or movies.

Note: You can change the mode dial when the camera is on or off.

Shooting Mode Descriptions

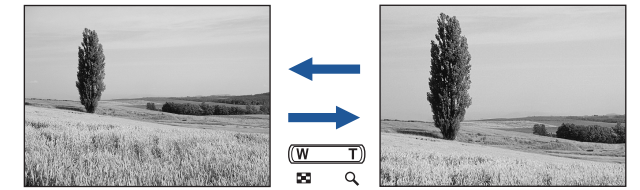
- Program auto** - The camera sets the optimal settings automatically.
- Image blur reduction** - Reduces the blur incurred by a moving subject or camera movement when taking pictures.
- SCENE** - **Scene modes** - Lets you select the optimal settings for specific situations. You can select from: Landscape; Landscape+Portrait; Portrait; Indoor; Sports; Beach&Snow; Behind Glass; Self Portrait+Self Timer; Self Portrait; Sunset; Available Light Portrait; Night Scene; Night+Portrait; Fireworks; Candle; Cuisine; Documents; Shoot&Select1; and Shoot&Select2.
- S** - **Shutter priority** - Lets you set the shutter speed, giving you the control to capture moving subjects. The camera sets the other settings.
- A** - **Aperture priority** - Lets you set the aperture, giving you control over the depth of field. The camera sets the other settings.
- Movie** - Lets you record movies.

Playback Mode Descriptions

- Playback** - Lets you enjoy the pictures you have taken in various viewing formats.
- Album** - Lets you view and organize your pictures in album format.

3 USING THE ZOOM

This camera features a zoom lens, letting you get closer to the subject or capture wide-angle shots.



- Press T to zoom in and get closer to the subject.
- Press W to zoom out and get more into the picture.

4 HOW TO USE THE AUTOFOCUS

a. While positioning the AF target mark over the subject, press and hold the shutter button halfway.

b. The green lamp, which indicates the focus and exposure are locked, remains lit as long as the shutter button is kept depressed halfway.

c. Press the shutter button completely to take the picture.

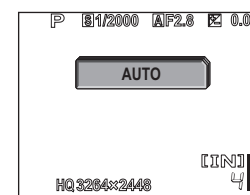


5 FLASH MODES

This camera features multiple flash modes. You can select the appropriate flash mode to suit the situation. The icons that are displayed on the monitor are shown below.

- (None)
- AUTO-FLASH** - The camera decides if the flash is needed.
- RED-EYE REDUCTION** - Reduces the incidence of red-eye by emitting pre-flashes to shrink pupil size before taking the picture.
- FILL-IN FLASH** - The flash always fires. Suitable for shooting backlit subjects.
- FLASH OFF** - The flash is turned off. Suitable for when flash photography is not permitted.

- Set the mode dial to .
- Press Δ repeatedly to toggle through the flash modes.



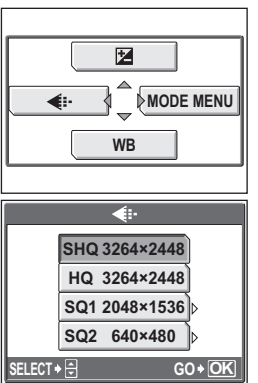
6 IMAGE QUALITY MODES

Your camera is equipped with multiple image quality modes, which determine the quality and image size of the pictures you take. Below is a general description of the commonly used modes. For a detailed description of all quality modes, refer to the Advanced Manual included on the CD-ROM.

Record Mode	File size	Usage Examples
SHQ (Super High Quality)	Larger ↑ ↓ Smaller	For making large prints
HQ (High Quality)		
SQ1 (Standard Quality)		
SQ2 (Standard Quality)		

- Set the mode dial to , and press \odot .
- Press \triangleleft to select [←-].
- Press $\Delta \nabla$ to select the record mode, and press \odot .

Note: The above refers to still pictures only. See the Advanced Manual to learn how to change the record mode for movies.



7 RECORDING A MOVIE

a. Set the mode dial to . Place the AF target mark on your subject.

b. Press the shutter button halfway to lock the focus and exposure, then press the shutter button completely to start recording (video and audio).

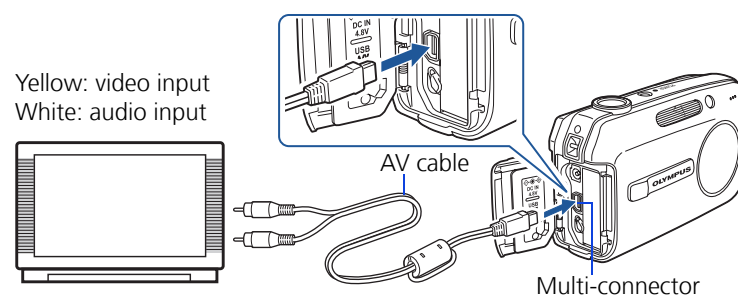
c. Press the shutter button again to stop recording.



Note: During movie recording, optical zoom is not available. To use the zoom, set [DIGITAL ZOOM] to [ON]. See the Advanced Manual on how to make further settings.

8 VIEWING PICTURES/MOVIES ON A TV

a. Make sure that the camera and TV are off. Connect the camera to the TV using the AV cable (included).



b. Turn on the TV and set to "video input".

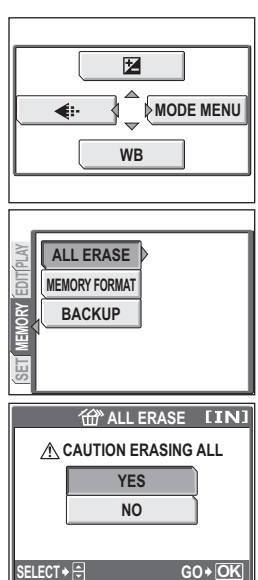
c. Set the mode dial to or , and turn on the camera. Use the arrow pad to display the picture you want to view.

Note: If the pictures are not displayed, consult your TV manual to set up the video source.

9 HOW TO ERASE ALL PICTURES

WARNING - PERFORMING THESE STEPS WILL DELETE ALL STORED PICTURES!

- Set the mode dial to , and press \odot .
- Press \triangleright to select [MODE MENU].
- Press $\Delta \nabla$ to select the [MEMORY] tab, and press \triangleright .
- Press $\Delta \nabla$ to select [ALL ERASE], and press \triangleright .
- Press $\Delta \nabla$ to select [YES], and press \odot .



10 E-MAILING A PICTURE

Using the OLYMPUS Master software (included), you can share your pictures with others by using the built-in e-mail feature.

After installing OLYMPUS Master, open the program and click "Browse Images". From the "Browse" window, select the picture(s) you want to send and click the "E-mail" tool button.

At this time, you can resize your pictures to make them more manageable for e-mail. This helps you stay within the e-mail capacity limitations set by your e-mail provider.

When finished, click the "Launch Mailer" button at the bottom of the window. Your default e-mail program will open, and the selected picture(s) will automatically be attached to a new message.

11 PRINTING A PICTURE

Using the OLYMPUS Master software (included), you can make prints of your pictures using your home photo printer.

After installing OLYMPUS Master, open the program and click the "Print Images at Home" icon on the main menu. You can create many different types of prints such as an index print, photos, albums, or calendars. Simply select the image(s) and add them to one of the many layouts within OLYMPUS Master. For detailed instructions, please refer to the "Help" menu in the software. You can also order prints online using the "Online Print" feature in OLYMPUS Master.

Alternatively, you can print your pictures by connecting your PictBridge* compatible camera directly to a PictBridge* compatible printer, such as the Olympus P-10 Digital Photo Printer. This permits fast, easy printing without using a computer.

* For detailed instructions on using PictBridge, please refer to your camera's Advanced Manual included in digital format on the CD-ROM.

CONTACT INFORMATION

OLYMPUS IMAGING AMERICA INC.

Two Corporate Center Drive, P.O. Box 9058, Melville, NY 11747-9058

Technical Support (USA):
24/7 online automated help: <http://olympusamerica.com/support>
Phone customer support: 1-888-553-4448 (toll free)

Our phone customer support is available from 8am - 10pm, (Monday to Friday) ET

E-mail: distec@olympus.com
Olympus software updates can be obtained at: <http://olympus.com/digital>

OLYMPUS