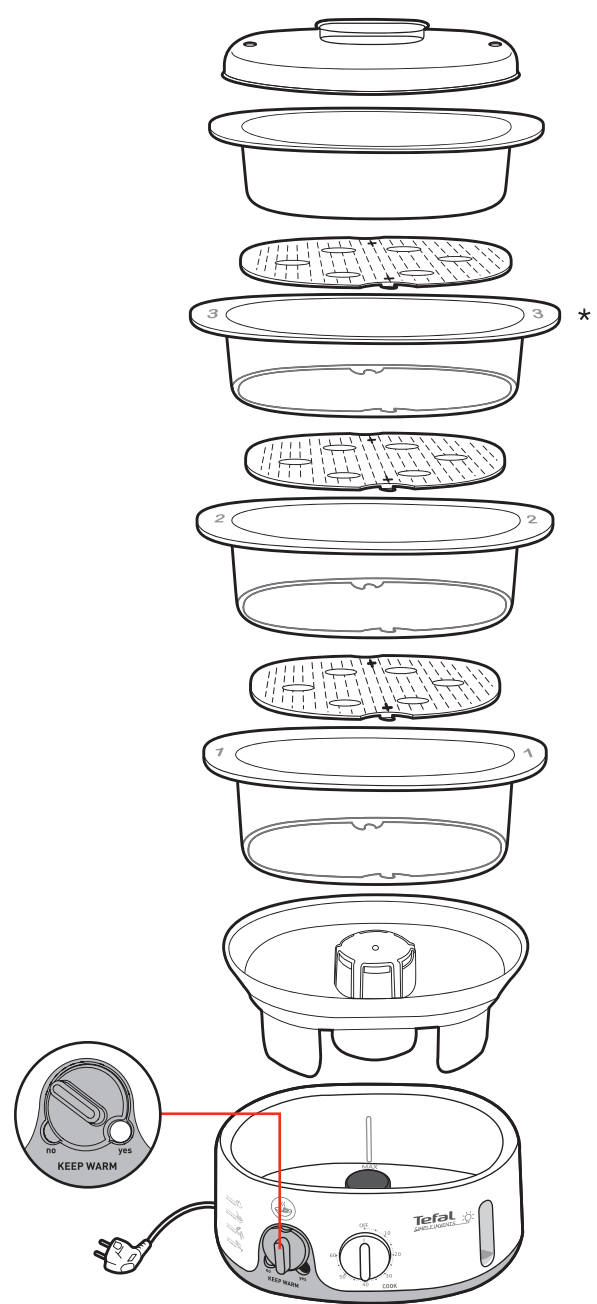


Tefal®

SIMPLY INVENTS



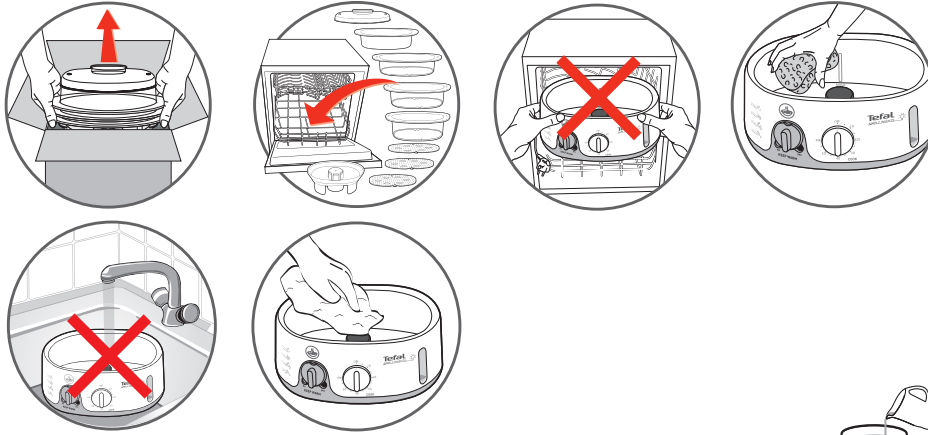
www.tefal.com



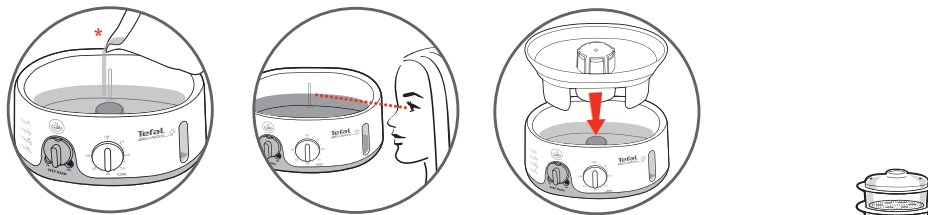
* Depending on model - Selon modèle - Je nach Modell - A seconda del modello - в зависимости от модели -
Modele göre - Ανάλογα το μοντέλο - Zależnie od modelu - V závislosti na modelu - Módelától függően - V závislosti od
modelu - Залежно від моделі - 根据不同型号 - 모델에 따라 다름



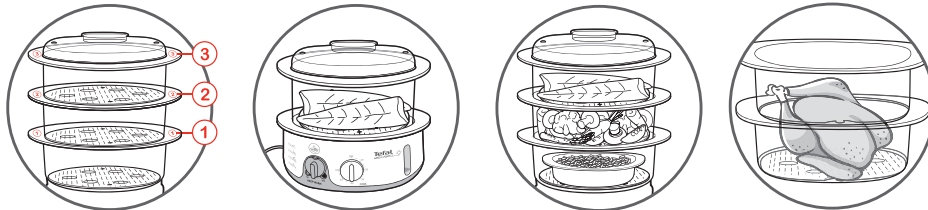
1



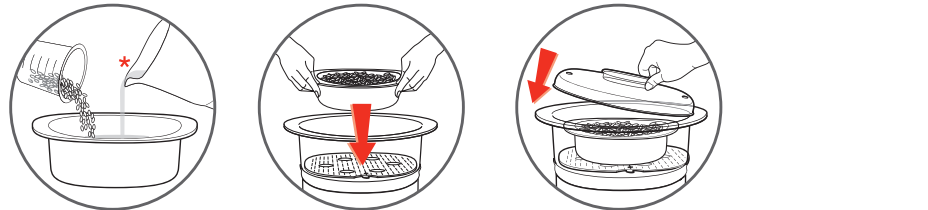
2



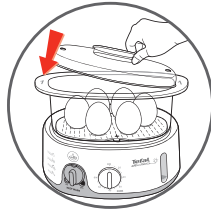
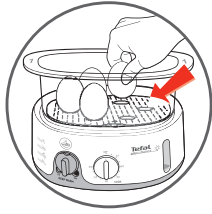
3



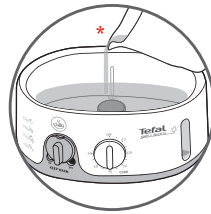
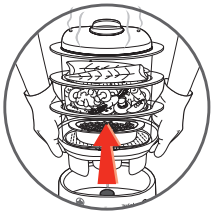
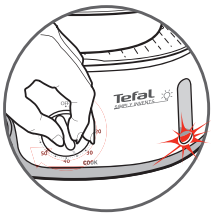
4



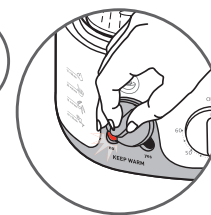
* Water - Eau - Wasser - Water - Acqua - Вода - Su - Νερό - Woda - Voda - Víz - Voda - Вода - ماء - 水 - 물



5

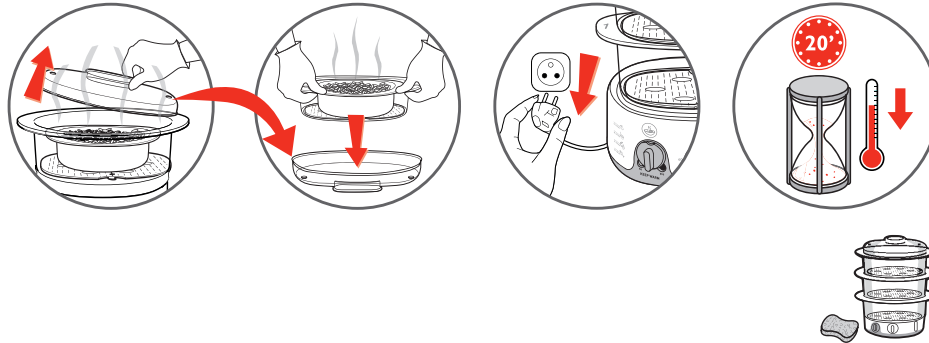


6

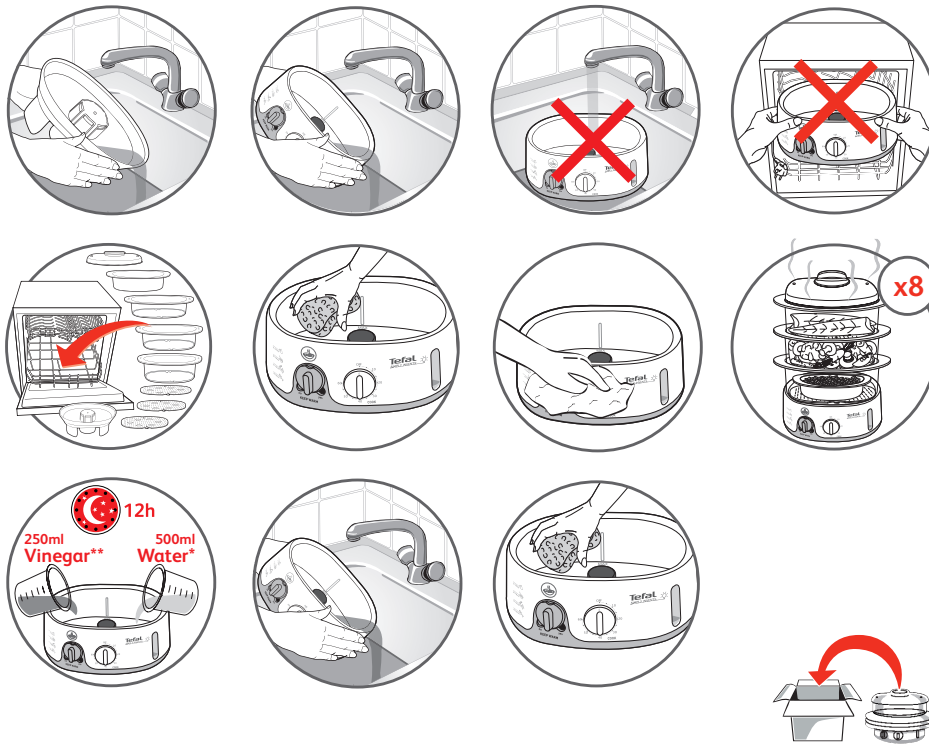


* Water - Eau - Wasser - Water - Acqua - Вода - Su - Νερό - Woda - Voda - Víz - Voda - Вода - ماء - 水 - 물

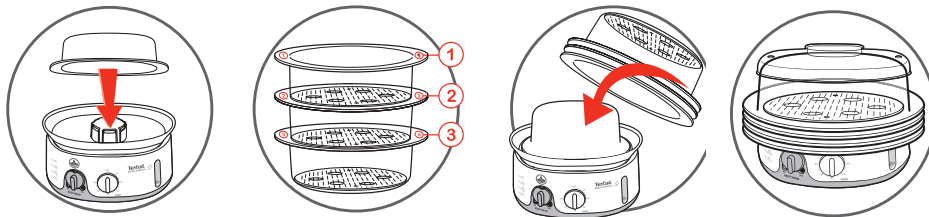
** Keep warm - Maintien au chaud - Warmhalte-Funktion - Warmhouden - Mantiene al caldo - Хранить теплым - Sıcak tutma - Διατήρηση θερμοκρασίας - Utrzymuje ciepło - Udrzēni teplého jídla - Melegen tartó funkció - Udržovanie teplého jedla - Зберірає тепло 保温 보온



7



8



* Water - Eau - Wasser - Water - Acqua - Вода - Su - Nерó - Woda - Voda - Víz - Voda - Вода - ماء - 水 - 물
 ** Vinegar - Vinaigre - Essig - Azijn - Aceto - Υγκυσ - Sirke - Ξίδι - Ocet winny - Ocet - Ecet - Ocot - Oцeт - خلّ - 醋 - 식초



9

	/Nb	
	450 g	8 -10 min.
	450 g	10 -15 min.
	400 g	16 -21 min.
	600 g	25 -30 min.
	1 kg	15 -20 min.
	200 g	3 -7 min.
	100 g	5 -10 min.
<hr/>		
	450 g	15 -20 min.
	4	30 -35 min.
	600 g	20 -25 min.
	450 g	12 -15 min.
	500 g	10 -15 min.
	10	8 -10 min.
	6	15 min.
<hr/>		
	3	30 -35 min.
	400 g	20 -25 min.
	400 g	16 -21 min.
	500 g	10 -15 min.
	600 g	16 -19 min.
	500 g	10 -15 min.
	300 g	10 -12 min.
	500 g	20 -22 min.

	/Nb	
	500 g	15 -20 min.
	500 g	10 -15 min.
	500 g	15 -20 min.
	500 g	10 -15 min.
	400 g	20 min.
	400 g	25 min.
	600 g	40 -45 min.
	600 g	15 -20 min.
	400 g	20 -25 min.
	600 g	12 -15 min.
	500 g	37 -48 min.
	300 g	10 -15 min.
	400 g	10 -15 min.
<hr/>		
	200 g	10 min.
	200 g	20 -25 min.
	150 g	25 -30 min.
	150 g	15 min.
<hr/>		
	4	10 -15 min.
	4	20 -25 min.
	450 g	15 -20 min.
	4	10 -15 min.



10



6

