



HR7627
HR7628
HR7629

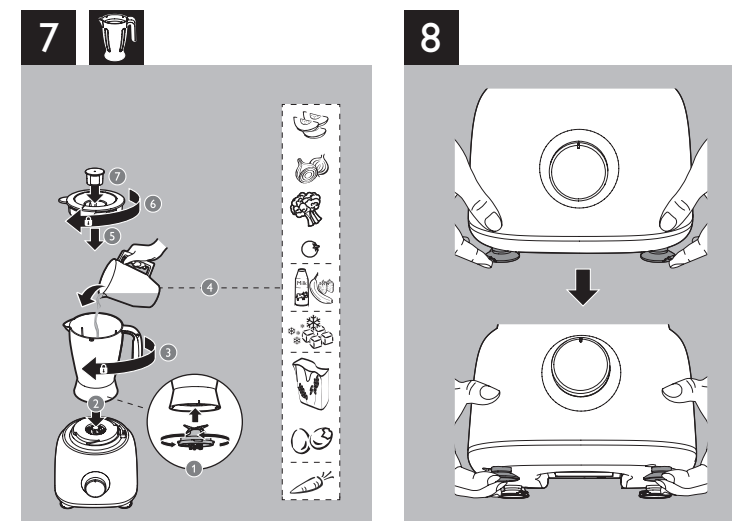
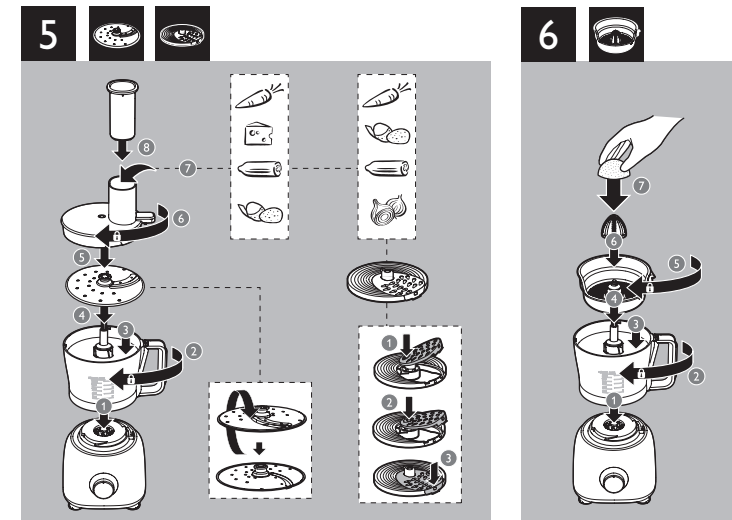
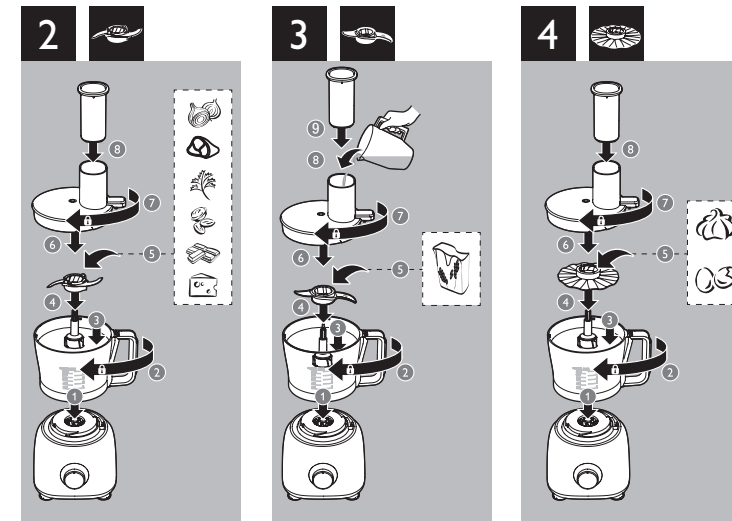
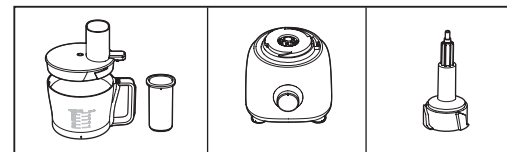
EN User manual
RU Руководство пользователя

KK Қолданушының нұсқасы
UK Посібник користувача

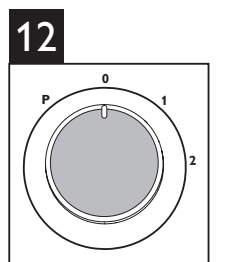
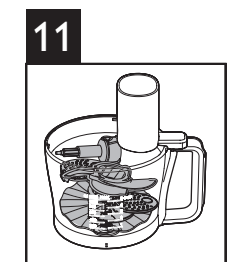
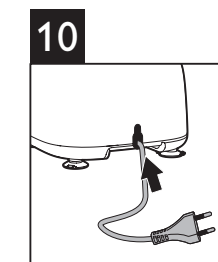
PHILIPS



1			(MAX)	(MAX)	
			5 x 1 sec	500 g	P
			5 x 1 sec	500 g	P/2
			30 sec	50 g	P
			60 sec	250 g	2
			45 sec	250 g	2
			30 sec	200 g	2
			2-3 min	500 g 360 ml	1
			60-180 sec	350 ml	1
			60-180 sec	4 pcs	1
			30 sec	500 g	1
			30 sec	500 g	1
			30 sec	2 pcs	1
			30 sec	300 g	1
			30 sec	500 g	1
			30 sec	200 g	1
			30 sec	2 pcs	1
			30 sec	500 g	1
			30 sec	500 g	1
			30 sec	500 g	1
			4 min	1 kg	1
			20 sec	500 g	1
			1 min	1 L	2
			1 min	1 L	2
			1 min	1 L	2
			P x 9	6 x * 400 g	P
			3 min	400 g 600 ml	2



9							
	✓	✓	✗		✓	✓	✓
	✓	✓	✗		✓	✓	✓
	✓	✓	✓		✓	✓	✗
	✓	✓	✗		✓	✓	✓
	✓	✓	✗		✗	✗	✓



1 Important

Read this user manual carefully before you use the appliance, and save the user manual for future reference.

Danger

- Do not immerse the motor unit in water nor rinse it under the tap.

Warning

- Never use your fingers or an object to push ingredients into the feeding tube while the appliance is running. Only use the pusher.
- Before you connect the appliance to the power, make sure that the voltage indicated on the bottom of the appliance corresponds to the local power voltage.
- Never connect this appliance to a timer switch, to avoid a hazardous situation.
- If the power cord, the plug, or other parts are damaged, do not use the appliance.
- If the power cord is damaged, you must have it replaced by Philips, a service center authorized by Philips, or similarly qualified persons to avoid a hazard.
- This appliance is not intended for use by persons (including children) with reduced physical, sensory or mental capabilities, or lack of experience and knowledge, unless they have been given supervision or instruction concerning use of the appliance by a person responsible for their safety.
- For their safety, do not allow children to play with the appliance.
- Never let the appliance run unattended.
- If food sticks to the wall of the blender jar or bowl, switch off the appliance and unplug it. Then use a spatula to remove the food from the wall.
- Be careful when you handle or clean the discs, the blade unit of the food processor, and the blade unit of the blender. The cutting edges are very sharp.
- Do not touch the blades, especially when the appliance is plugged in. The blades are very sharp.
- If the blades get stuck, unplug the appliance before you remove the ingredients that block the blades.

Caution

- Never switch off the appliance by turning the blender jar, the bowl, or their lids. Always switch off the appliance by turning the knob to **0**.
- Unplug the appliance immediately after use.
- Always unplug the appliance before you reach into the blender jar with your fingers or an object.
- Wait until the moving parts stop running before you remove the lid of the bowl or jar. Do not exceed the maximum level indication on the jar or the bowl.
- Thoroughly clean the parts that come into contact with food before you use the appliance for the first time.
- Before you remove, clean or change the accessories, switch off and unplug the appliance.
- Never use any accessories or parts from other manufacturers or that Philips does not specifically recommend. If you use such accessories or parts, your guarantee becomes invalid.
- This appliance is intended for household use only.
- Do not exceed the quantities and processing time indicated in the user manual.
- Let hot ingredients cool down (< 80°C) before processing them.
- Always let the appliance cool down to room temperature after each batch that you process.
- Certain ingredients may cause discolorations on the surface of the parts. This does not have a negative effect on the parts. The discolorations usually disappear after some time.
- Noise level = 85 dB [A]

Electromagnetic fields (EMF)

This Philips appliance complies with all standards regarding electromagnetic fields (EMF). If handled properly and according to the instructions in this user manual, the appliance is safe to use based on scientific evidence available today.

Recycling



Your product is designed and manufactured with high quality materials and components, which can be recycled and reused.

When you see the crossed-out wheel bin symbol attached to a product, it means the product is covered by the European Directive 2002/96/EC:



Never dispose of your product with other household waste. Please inform yourself about the local rules on the separate collection of electrical and electronic products. The correct disposal of your old product helps prevent potentially negative consequences on the environment and human health.

2 Introduction

Congratulations on your purchase and welcome to Philips! To fully benefit from the support that Philips offers, register your product at www.philips.com/welcome.

This appliance is equipped with a built-in safety lock. You can only switch on the appliance after you correctly assemble the following parts on the motor unit:

- the food processor bowl and its lid, or
- the blender jar and its lid (HR7628, HR7629 only), or
- the citrus press (HR7629 only)

If these parts are assembled correctly, the built-in safety lock is unlocked.

For recipes to use with your food processor, go to www.philips.com/kitchen

3 Food processor

Warning

- Never use your fingers or an object to push ingredients into the feeding tube while the appliance is running. Only use the pusher.

Blade unit

Before you start, make sure you assemble according to Fig. 2.

You can use the blade unit to chop, mix, blend, or puree ingredients. You can also use it to mix and blend cake batters.

Caution

- Do not use the blade unit to chop hard ingredients, like coffee beans, turmeric, nutmeg, and ice cubes, as this may cause the blade to get blunt.

Note

- Do not let the appliance run too long when you chop (hard) cheese or chocolate. Otherwise these ingredients become too hot, start to melt, and turn lumpy.
- Pre-cut large pieces of food into pieces of approx. 3 x 3 x 3 cm.

- Turn the the bowl clockwise to fix it on the motor unit, and then put the tool holder in the bowl.
 - When the bowl is fixed correctly, you hear a click.
- Put the blade unit on the tool holder.
- Put the ingredients in the bowl.
- Put the lid on the bowl, and then turn the lid clockwise to fix it.
 - When the lid is assembled correctly, you hear a click and the lid is fixed to the bowl handle.
- Put the pusher into the feeding tube.
- Connect the power plug to the power supply.
- Check the preparation time, the maximum amount and the speed setting required for the ingredients in Table 1. Turn the knob to the desired speed setting.
- After use, turn the knob to **0**, and then unplug the appliance.

Tip

- When you chop onions, turn the knob to **P** a few times to prevent the onions from becoming too finely chopped.
- How to remove food that sticks to the blade or to the inside of the bowl? 1. Switch off the appliance, and then unplug it. 2. Remove the lid from the bowl. 3. Remove the ingredients from the blade or from the side of the bowl with a spatula.

Kneading accessory

Before you start, make sure you assemble according to Fig. 3.

You can use the kneading accessory to knead yeast dough for bread and pizzas. You need to adjust the amount of liquid to form the dough according to the humidity and temperature condition.

Note

- Do not use the kneading accessory to blend cake batters. Use the blade unit for this job.
- Always put the kneading accessory in the bowl before you add the ingredients.

- Turn the the bowl clockwise to fix it on the motor unit, and then put the tool holder in the bowl.
 - When the bowl is fixed correctly, you hear a click.
- Put the kneading accessory on the tool holder.
- Put the ingredients in the bowl.
- Put the lid on the bowl, and then turn the lid clockwise to fix it.
 - When the lid is assembled correctly, you hear a click and the lid is fixed to the bowl handle.
- Put the pusher into the feeding tube.
- Connect the power plug to the power supply.

- Turn the knob to the **1** position.
- Check the preparation time, the maximum amount and the speed setting required for the ingredients in Table 1.
- After use, turn the knob to **0**, and then unplug the appliance.

Discs and Inserts

Before you start, make sure you pick your desired disc from following and assemble according to Fig. 4 and Fig. 5.

- Emulsifying disc
- Insert for fine (HR7627 and HR7628 only)
- Insert for granulating (HR7627 and HR7628 only)
- Reversible slicing / shredding disc (coarse) (HR7629 only)

Caution

- Be careful when you handle the slicing blade of disc. It has a very sharp cutting edge.
- Never use the disc to process hard ingredients, like ice cubes.
- Do not exert too much pressure on the pusher when you press ingredients into the feed tube.

Note

- Pre-cut large ingredients into chunks that fit in the feeding tube.

- Turn the bowl clockwise to fix it on the motor unit, and then put the tool holder in the bowl.
 - When the bowl is fixed correctly, you hear a click.
- Put the disc on the shaft. For inserts (HR7627 and HR7628 only), place an insert in the insert holder as indicated below, then place the insert holder with insert on the shaft.
 - Place the opening of the insert over the shaft of the insert holder.
 - Push the opening of the insert over the projection on the shaft.
 - Press the insert onto the insert holder until it locks in position with a click.
- Put the lid on the bowl, and then turn the lid clockwise to fix it.
 - When the lid is assembled correctly, you hear a click and the lid is fixed to the bowl handle.
- Put the ingredients into the feeding tube with the pusher. Fill the feeding tube evenly for the best results. When you have to process a large amount of ingredients, process small batches and empty the bowl between batches.
- Connect the power plug to the power supply.
- Check the preparation time, the maximum amount and the speed setting required for the ingredients in Table 1. Select the speed that matches the color of the accessory.
- After use, turn the speed selector to **0**, and then unplug the appliance.

Citrus press (HR7629 only)

Before you start, make sure you assemble according to Fig. 6.

You can use the citrus press to squeeze citrus fruits.

- Turn the the bowl clockwise to fix it on the motor unit, and then put the tool holder in the bowl.
 - When the bowl is fixed correctly, you can hear a click .
- Put the sieve for citrus press on the tool holder in the bowl. Make sure that the projection on the sieve is locked in the slot of the bowl handle.
 - When the sieve is fixed correctly, you can hear a click .
- Put the cone on the sieve.
- Connect the power plug to the power supply.
- Check the maximum amount required for the ingredients in Table 1. Turn the knob to speed **1**.
 - The cone starts rotating.
- Press the citrus fruit onto the cone.
- Stop pressing from time to time to remove the pulp from the sieve. When you finish pressing or when you want to remove the pulp, turn the knob to **0** and remove the bowl from the appliance with the sieve and cone on it.

Blender (HR7628 and HR7629 only)

Before you start, make sure you assemble according to Fig. 7.

The blender is intended for:

- Blending fluids, like dairy products, sauces, fruit juices, soups, mixed drinks, and shakes.
- Mixing soft ingredients, like pancake batter.
- Pureeing cooked ingredients, like baby food.
- Crushing ice.

Note

- Do not exert too much pressure on the handle of the blender jar.
- Never open the lid to put your hand or any object in the jar while the blender is running.
- Always assemble the sealing ring onto the blade unit before you attach the blade unit to the blender jar.
- To add liquid ingredients during processing, pour them into the blender jar through the feeding hole.
- Pre-cut solid ingredients into small pieces before you process them.
- If you want to prepare a large quantity, process small batches of ingredients instead of a large quantity at once.
- To avoid spillage: When you process a liquid that is hot or tends to foam (for example, milk), do not put more than 1 liter of liquid in the blender jar.
- If you are not satisfied with the result, switch off the appliance and stir the ingredients with a spatula. Remove some of the contents to process a smaller quantity or add some liquid.

- Turn the blade unit on the blender jar.
- Place the blender jar on the motor unit and turn it clockwise to fix it.
 - When the jar is fixed correctly, you hear a click.
- Put the ingredients in the blender jar within the maximum level indication.
- Place the lid on the blender jar, and then turn it clockwise to fix it.
- Connect the power plug to the power supply.
- Check the preparation time, the maximum amount and the speed setting required for the ingredients in Table 1. Turn the knob to the desired speed setting. To crush ice, turn the knob to **P**. Press the button again to stop.
- After use, turn the knob to **0**, and then unplug the appliance.

Tip

- How to remove the ingredients that stick to the side of the blender jar? 1. Switch off the appliance, and then unplug it. 2. Open the lid, and then use a spatula to remove the ingredients from the side of the jar. 3. Keep the spatula at least 2 cm from the blade.

Mini Chopper accessory (Optional)

You can order a mini chopper (under service code number 9965 100 57198/9965 100 52997) from your Philips dealer or a Philips service center as an extra accessory.

You can use the mini chopper to chop coffee beans, peppercorns, nuts, herbs etc. Use speed 2 and process for 30 sec. Do not exceed the maximum level indicated on the mini chopper.

For best results when processing beef, please use refrigerated beef cubes. Use max of 100g beef cubes at speed P for 5 sec.

Quick cleaning

You can follow the following steps to clean the food processor bowl and blender jar easier.

Note

- Make sure that the blade is assembled in the bowl if you clean the food processor bowl.

- Pour lukewarm water (not more than 0.5 liters) and a few drops of washing-up liquid into the food processor bowl or blender jar.
- Place the lid on the food processor bowl or blender jar, and then turn it clockwise to fix it.
- Turn the knob to **P**. Let the appliance run for 30 seconds or until the food processor bowl or blender jar is clean.
- After use, turn the knob to **0**, and then unplug the appliance.
- Detach the blender jar or food processor bowl and rinse it with clean water.

Cleaning and storage

Warning

- Before you clean the appliance, unplug it.

Caution

- Make sure that the cutting edges of the blades and discs do not come into contact with hard objects. This may cause the blade to get blunt.
- The cutting edges are sharp. Be careful when you clean the blade unit of the food processor; the blade unit of the blender and the discs.

- Clean the motor unit with a moist cloth.
- Clean the other parts in hot water (< 60°C) with some washing-up liquid or in a dishwasher.
- Store the product in a dry place.

4 Guarantee and service

If you have a problem, need service, or need information, see www.philips.com/support or contact the Philips Consumer Care Center in your country. The phone number is in the worldwide guarantee leaflet. If there is no Consumer Care Center in your country, go to your local Philips dealer.

