



# MUSICflow H3

## SMART HI-FI AUDIO

Wireless Multi-room

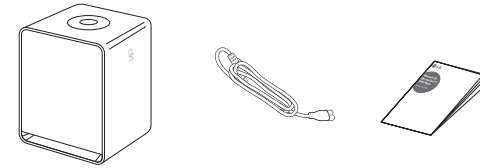
Model : NP8340 (H3)

### ENGLISH | SIMPLE MANUAL

To view the instructions of advanced features, visit <http://www.lg.com> and then download Owner's Manual. Some of the content in this manual may differ from your speaker.

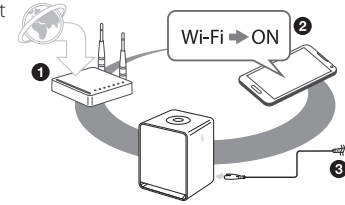


## Step 1 Unpacking



## Step 2 Getting Started

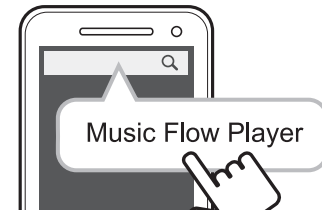
- 1 Make sure that wireless network environment using a router is installed at your home.
- 2 Connect your smart device to your home network.
- 3 Connect the speaker to the power supply.



- ! The wireless router should be connected to the internet.
- Wireless signal interference may lead to disconnection of network or stopping playback.
- Depending on the speed of your network, playback of online contents may not work well.

## Step 3 Installing "Music Flow Player" App

Download "Music Flow Player" on the iTunes store or Google Play Store.



- A** Type "Music Flow Player" in the search bar and tap "Search".



- B** Scan the QR code using the scanning application.

- ! Depending on the device, "Music Flow Player" app may not work.
- Music Flow Player app will be available in version of the software as follow; Android O/S : Ver 2.3.3 (or later) iOS O/S : Ver 5.1.1 (or later)

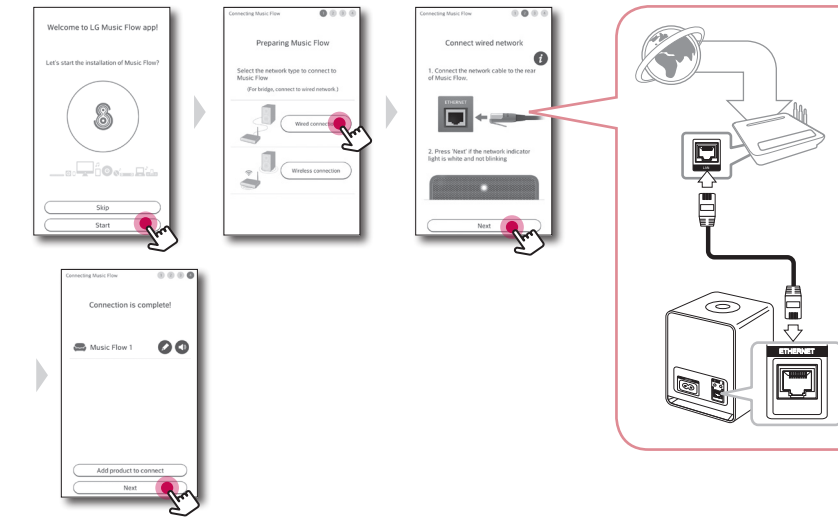
*Tip.* Media server software allows you to access audio files stored in media server and enjoy them on your speaker via home networking. On [www.lg.com](http://www.lg.com) website, type model name (NP8340) in the search bar and find media server software on support tab.

- Windows : Music Flow PC Software
- Mac OS : Nero MediaHome 4 Essentials

## Step 4 Network Connection

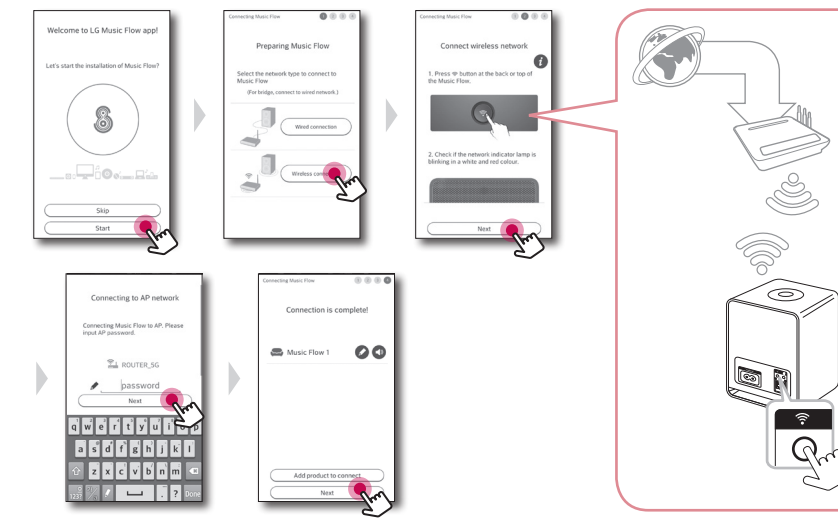
### Option 1. Wired Connection

On Music Flow Player app, select [Wired connection] and follow the directions on screen.



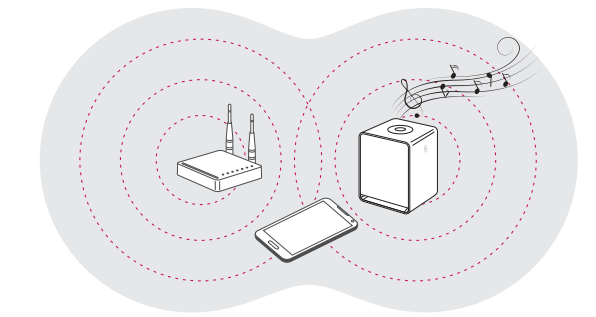
### Option 2. Wireless Connection

On Music Flow Player app, select [Wireless connection] and follow the directions on screen.

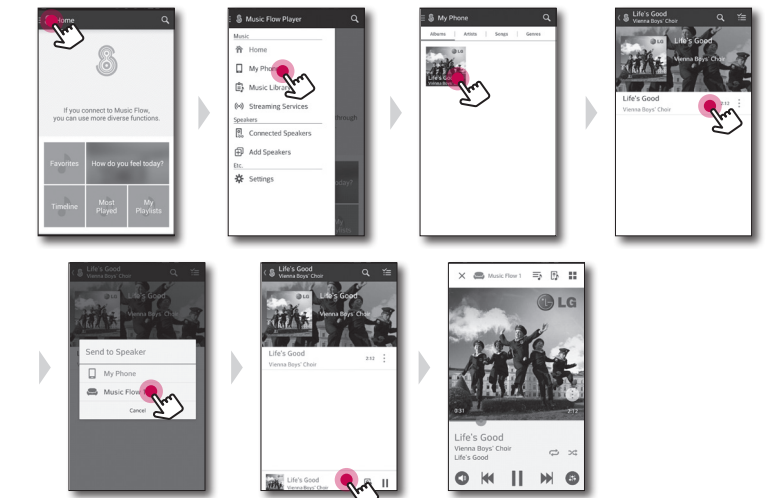


- ! You need to turn the speaker's power off and on again if you restart the router.
- You need to perform a factory set and setup the network connection for speaker, if you install new router.

## Step 5 Music Playback



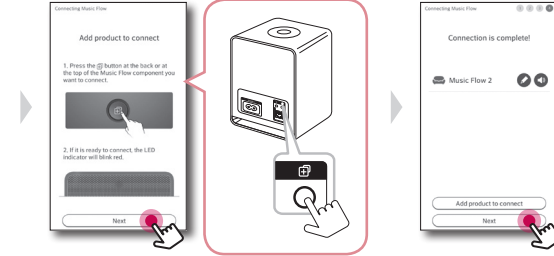
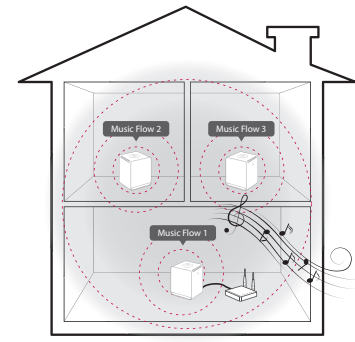
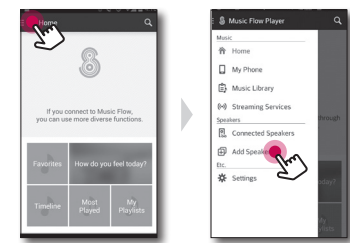
### Playing a song on this device



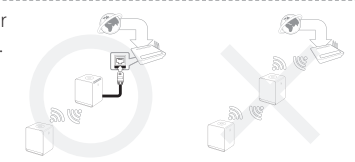
## Group Playback (Optional)

Any number of speakers can be grouped together to play the same music in synchrony.

### 1. Adding another LG SMART HI-FI AUDIO

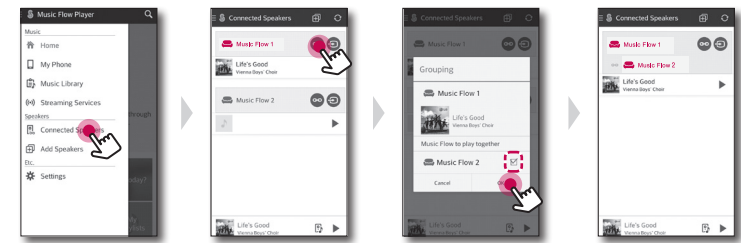


- When you enjoy the group playback, at least one speaker or LG R1 bridge (optional) should be connected by LAN cable.
- If the speakers are connected only wirelessly, disconnect all the wireless connections and reconnect them after connecting one wired.



### 2. Grouping

On Music Flow app, select [Connected Speakers] and follow the directions on screen.



- If the speakers are not grouped, you can enjoy different music on each speaker.
- For smooth group playback, it is recommended to select the speaker connected by LAN cable as a master speaker.
- The weak signal because of the long distance between speakers or wireless router and signal interference may cause abnormal playback.

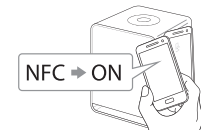
## Bluetooth Connection

- Select the Bluetooth mode with **BT/I/F** button on the speaker.
- On your Bluetooth device, make sure that Bluetooth is on and select "Music Flow H3 (XX.XX)".
- Play music on your Bluetooth device.



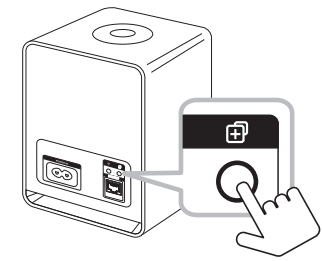
### NFC for Easy Pairing (Android Only)

You can pair simply and easily by tagging on the mark.



- When you are enjoying the music with Music Flow Player app, seamless playback is activated instead of Bluetooth pairing.

## Reset the Speaker



### Initializing the network settings

Press and hold button until you hear the beep sound once. Then all wireless network ports are deactivated and delete the stored wireless network information.

### Factory Set

Press and hold button until you hear the beep sound twice.

- Some of the content in this manual may differ from Music Flow Player app depending on the application's version.

## Specification

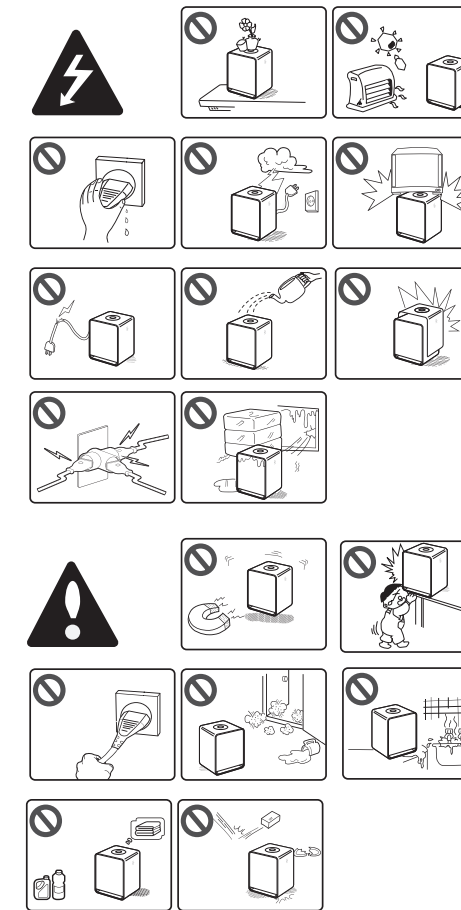
Power requirements	200 - 240 V ~ 50 / 60 Hz
Power consumption	14 W Networked standby : 5.4 W (If all network ports are activated.)
Dimensions (W x H x D)	Approx. 125 x 175 x 115 mm without foot
Net Weight (Approx.)	2.0 kg

Design and specifications are subject to change without notice.

Notice (the date of the production of goods). First figure (of the left) of series number means Year, next 2 figures

- Month of the production of this goods.

## Safety Information



**WARNING:** TO PREVENT FIRE OR ELECTRIC SHOCK HAZARD, DO NOT EXPOSE THIS PRODUCT TO RAIN OR MOISTURE.

**WARNING:** Do not install this equipment in a confined space such as a book case or similar unit.

**CAUTION:** The apparatus shall not be exposed to water (dripping or splashing) and no objects filled with liquids, such as vases, shall be placed on the apparatus.

**CAUTION:** Do not block any ventilation openings. Install in accordance with the manufacturer's instructions.

Slots and openings in the cabinet are provided for ventilation and to ensure reliable operation of the product and to protect it from over heating. The openings shall be never be blocked by placing the product on a bed, sofa, rug or other similar surface. This product shall not be placed in a built-in installation such as a bookcase or rack unless proper ventilation is provided or the manufacturer's instruction has been adhered to.

**CAUTION concerning the Power Cord**  
To disconnect power from the mains, pull out the mains cord plug. When installing the product, ensure that the plug is easily accessible.

### Disposal of your old appliance

- When this crossed-out wheeled bin symbol is attached to a product it means the product is covered by the European Directive 2002/96/EC.
- All electrical and electronic products should be disposed of separately from the municipal waste stream via designated collection facilities appointed by the government or the local authorities.
- The correct disposal of your old appliance will help prevent potential negative consequences for the environment and human health.
- For more detailed information about disposal of your old appliance, please contact your city office, waste disposal service or the shop where you purchased the product.

### RF Radiation Exposure Statement

This equipment should be installed and operated with minimum distance of 20 cm from your body.

**NOTICE:** For safety marking information including product identification and supply ratings, please refer to the main label on the bottom or rear of the apparatus.



**CAUTION:** TO REDUCE THE RISK OF ELECTRIC SHOCK DO NOT REMOVE COVER (OR BACK) NO USER-SERVICEABLE PARTS INSIDE REFER SERVICING TO QUALIFIED SERVICE PERSONNEL.

This lightning flash with arrowhead symbol within an equilateral triangle is intended to alert the user to the presence of uninsulated dangerous voltage within the product's enclosure that may be of sufficient magnitude to constitute a risk of electric shock to persons.

The exclamation point within an equilateral triangle is intended to alert the user to the presence of important operating and maintenance (servicing) instructions in the literature accompanying the product.

	Телефон	Режим работы	Интернет
Россия	8-800-200-7676	Круглосуточно	
Беларусь	8-820-0071-1111		
Латвия	8-0200-201	9:00 - 17:00 (Пн-Пт.)	
Литва	8-800-08-081		
Эстония	800-9990	8:00 - 21:00 (Пон.-Пят.) 8:30 - 18:30 (Суб., Вос.)	http://www.lg.com
Украина	0-800-303-000		
Казахстан	8-8000-805-805 2255 (GSM)	9:00-20:00 (Пн.-Пят.) 9:00-18:00 (Суб., Вс.)	
Узбекистан	8 800 120 2222		
Кыргызстан	800 0071 0005	Круглосуточно	
Молдова	00-800-0071-0005 (Тольо дун стандартный телефон)	Круглосуточно	



Символ «не для пищевой продукции» применяется в соответствие с техническим регламентом Таможенного союза «О безопасности упаковки» 005/2011 и указывает на то, что упаковка данного продукта не предназначена для повторного использования и подлежит утилизации. Упаковку данного продукта запрещается использовать для хранения пищевой продукции.

Символ Кедендік одақтың 005/2011 техникалық регламентіне сәйкес қолданылады және осы өнімнің қаптамасын екінші рет пайдалануға арналмағанын және жоюға жататынын көрсетеді. Осы өнімнің қаптамасын азық-түлік өнімдерін сақтау үшін пайдалануға тыйым салынады.



Символ «петля Мебиуса» указывает на возможность утилизации упаковки. Символ может быть дополнен обозначением материала упаковки в виде цифрового и/или буквенного обозначения.

Символ қаптаманы жою мүмкіндігін көрсетеді. Символ сандық код және/немесе әріп белгілері түріндегі қаптама материалының белгісімен толықтырылуы мүмкін.

### Российская Федерация

Импортер ООО "ЛГ Электроник Рус"

Адрес импортера: 143160 Российская Федерация, Московская область, Рузский район, сельское поселение Дороховское, 86 км. Минского шоссе, д.9

Адрес производителя: ПТ. ЛГ Электроник Индонезия  
17520, Индонезия, Джава Барат, Бекаси, Сикаранг Барат, строение Г, MM2100, Кавасан Индастри

Сделано в Индонезии

### Україна

Найменування та адреса імпортера  
ПІІ «ЛГ ЕЛЕКТРОНІКС Україна» вул. Басейна, 6, м. Київ, 01004,  
Тел.: 044 201-43-50

### Қазақстан Республикасы

Импорртаушы АҚ "ЭЛ Джи Электроник Алматы Қазақстан", 050061, Алматы қ., к. Көкорай, 2А

Өндірушінің мекенжайы: PT. LG Electronics Indonesia,  
17520, Индонезия, Джава Барат, Бекаси, Сикаранг Барат, құрылыс Г, MM2100,  
Кавасан Индастри.

Қазақстан Республикасы территориясында тұтынушылардан келіп түскен талаптар мен ұсыныстарды қарайтын және тауарды жөндеу мен техникалық қызмет көрсететін ұжым:

АҚ «Эл Джи Электроник Алматы Қазақстан», 050061, Қазақстан Республикасы, Алматы қ., Көкорай, 2А. Басқа сервис орталықтары жайында мағлұматты "Тұтынушыға қызмет көрсету орталығына" телефон шалу арқылы білуге болады.

Индонезияда жасалған